



# 40

PRODUKTY DOSTĘPNE W PONAD 40 KRAJACH  
PRODUCTS AVAILABLE IN OVER 40 COUNTRIES  
PRODUKTE IN MEHR ALS 40 LÄNDERN ERHÄLTICH

# 12.500

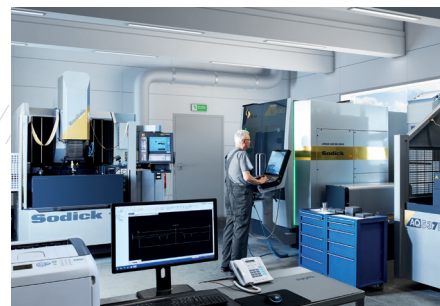
PRODUKTÓW W ASORTYMENCIE  
PRODUCTS IN THE OFFER  
PRODUKTE IM SORTIMENT

# 1.130

KLIENTÓW  
CUSTOMERS  
KUNDEN

# 45

PRODUKTY W 45 SIECIACH DIY  
PRODUCTS OFFERED IN 45 DIY CHAINS  
PRODUKTE IN 45 DIY-MARKTKETTEN



## logistics

Centrum logistyczne o powierzchni 10.000 m<sup>2</sup> gwarantuje sprawny wysyłkę towarów. Logistykę na terenie Europy realizujemy własną flotą transportową.

Our 10.000 m<sup>2</sup> logistics centre guarantees efficient dispatch of goods. Logistics within Europe are handled by our own transport fleet.

Ein Logistikzentrum mit einer Fläche von 10.000 m<sup>2</sup> garantiert den effizienten Warenversand. Die Logistik innerhalb Europas Wir realisieren unsere eigenen Transportflotte.



Wychodzimy się z Etki, jednego z najczystszych regionów Europy. Czujemy się odpowiedzialni za dziedzictwo przyrodnicze i przyszłość regionu. Tworzymy nasze produkty zgodnie z zasadami zrównoważonego rozwoju. Z biegiem lat udoskonalamy proces produkcji, zwiększając ilość składników mineralnych w produktach i zwiększamy wykorzystanie surowców z recyklingu.

We hail from Etk, a city located in one of the cleanest regions in Europe. We feel responsibility for the natural heritage and the future of the region. Our products are created in accordance with the principles of sustainability in mind. Over the years, we have been improving the production process, increasing the amount of minerals in the products and increasing the use of recycled raw materials.

Wir kommen aus Etk, einer der saubersten Regionen in Europa. Deshalb wir fühlen uns verantwortlich für Natur und die Zukunft der Region. Wir stellen unsere Produkte nach den Grundsätzen der Nachhaltigkeit her. Im Laufe der Jahre haben wir den Produktionsprozess verbessert, den Anteil an Mineralien in den Produkten erhöht und den Einsatz von recycelten Rohstoffen steigert.

## design lab

Cezar od zawsze stawia na innowację. Design Lab to zespół designerów i konstruktorów projektujących nowe produkty oraz sposoby ich wytwarzania.

Cezar has always relied on innovation. Our Design Lab is a team of designers and developers who design new products and ways of making them.

Cezar hat schon immer auf Innovation gesetzt. Das Design Lab besteht aus einem Designern und Konstrukteure, das neue Produkte und Methoden zu ihrer Herstellung.

# 36.000

(m<sup>2</sup>) POWIERZCHNI UŻYTKOWEJ  
(m<sup>2</sup>) OF USABLE FLOOR AREA  
(m<sup>2</sup>) NUTZFLÄCHE

# Q

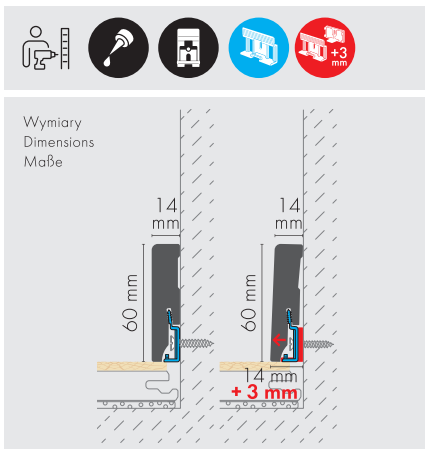
JAKOŚĆ POTWIERDZONA CERTYFIKATAMI  
QUALITY PROVEN WITH CERTIFICATES  
ZERTIFIZIERTE QUALITÄT



# ZAPOZNAJ SIĘ Z OZNACZENIAMI W KATALOGU PLEASE SEE THE SYMBOLS IN THE CATALOGUE BEACHTEN SICH MIT MIT DIE SYMBOLEN DES KATALOGS



## WYMIARY I SPOSOBY MONTAŻU DIMENSIONS AND ASSEMBLY INSTRUCTIONS ERSETZUNG UND MONTAGEMETHODE



- Kod QR - szczegółowa instrukcja montażu  
QR code - detailed assembly instructions  
QR-Code- ausführliche Montageanleitung
- Polistyren ekstrudowany  
Extruded polystyrene  
Extrudierter Polystyrol-Hartschaum
- Poliuretan  
Polyurethane  
Polyurethan
- Kanał do taśm Led  
LED strip channel  
Profil für Led Streifen
- Okleina ze strukturą drewna  
Wood-textured laminate  
Holzstruktur-Laminat
- Produkt z technologią **LIGHTBLOCKER®**  
Product with **LIGHTBLOCKER®** technology  
Produkt mit **LIGHTBLOCKER®** - Technologie



- Profil do wyginania  
A profile for bending  
Biegeprofil

## SYMBOLE LOGISTYCZNE LOGISTICS SYMBOLS LOGISTISCHE SYMBOLE

- Kolor lub deseń produktu  
Product colour or design  
Produktfarbe oder - design
- Efekt wykończenia produktu  
Effect of the product finish  
Oberflächenfinish-Effekt
- Ilość w opakowaniu zbiorczym  
Quantity per bulk package  
Menge pro Sammelverpackung

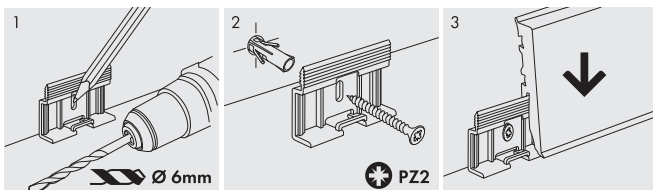
- Numer katalogowy  
Catalogue number  
Katalognummer
- Długość produktu  
Product length  
Produktlänge
- Wymiary produktu  
Product dimensions  
Produktmaße

- Produkt do malowania  
Paintable product  
Überstreichbares Produkt
- Gotowy produkt — nie wymaga malowania.  
Ready to use — no painting required.  
Gebrauchsfertig — kein Anstrich erforderlich.
- Pojemność produktu  
Product capacity  
Produktkapazität
- Masa produktu  
Product weight  
Produktgewicht

## ZAPOZNAJ SIĘ ZE SPOSOBAMI MONTAŻU FAMILIARIZE YOURSELF WITH THE INSTALLATION METHODS MACHEN SIE SICH MIT DEN ONTAGEVERFAHREN VERTRAUT



### MONTAŻ NA KLIPS LISTEW LPC-50, LPC-51, LPC-52 CLIP-ON INSTALLATION LPC-50, LPC-51, LPC-52 SKIRTING BOARDS CLIPMONTAGE

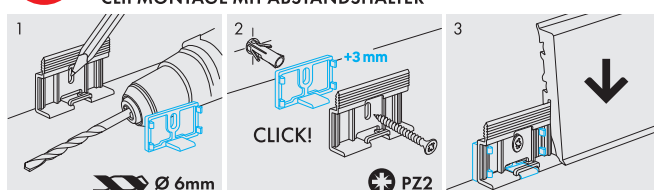


Przykręć klips do ściany wkrętem. / Install the clip on the wall with a screw. / Den Clip mit einer Schraube an der Wand befestigen.

Nałóż na klips listwę i dociśnij. / Place the skirting board in the clip and press down. / Die Leiste auf den Clip setzen und andrücken.



### MONTAŻ NA KLIPS Z PODKŁADKĄ DYSTANSOWĄ CLIP-ON INSTALLATION WITH SPACER CLIPMONTAGE MIT ABSTANDSHALTER



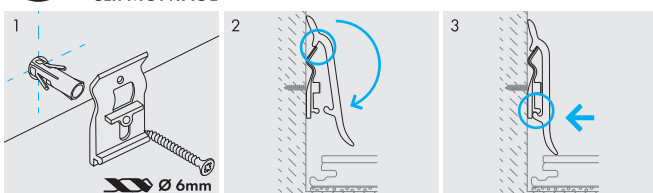
Włóż podkładkę do klipsa. / Insert the spacer into the clip. / Den Abstandshalter in den Clip einsetzen.

Przykręć klips z podkładką do ściany wkrętem. / Install the clip-on with spacer to the wall with a screw. / Den Clip mit Abstandshalter mit einer Schraube an der Wand befestigen.

Nałóż na klips listwę i dociśnij. / Place the skirting board in the clip and press down. / Die Leiste auf den Clip setzen und andrücken.



### MONTAŻ NA KLIPS LISTWY LPC-16 CLIP-ON INSTALLATION LPC-16 SKIRTING BOARD CLIPMONTAGE

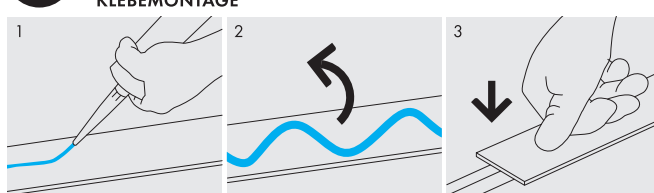


Przykręć klips do ściany wkrętem. / Install the clip on the wall with a screw. / Den Clip mit einer Schraube an der Wand befestigen.

Nałóż na klips listwę i dociśnij. / Place the skirting board in the clip and press down. / Die Leiste auf den Clip setzen und andrücken.



### MONTAŻ NA KLEJ ADHESIVE INSTALLATION KLEBEMONTAGE



Nałóż klej montażowy z tyłu listwy. / Apply the assembly adhesive to the back of the trim. / Den Montagekleber auf der Rückseite der Leiste auftragen.

Odwróć listwę i przyłóż ją do podłoża. / Turn the trim over and apply it to the substrate. / Die Leiste umdrehen und auf den Untergrund legen.

Mocno dociśnij. / Press down firmly. / Fest andrücken.



# WARUNKI UŻYTKOWANIA PRODUKTÓW

## CONDITIONS OF USE OF THE PRODUCTS

### VERWENDUNGSBEDINGUNGEN FÜR DIE PRODUKTE

W trosce o Twoje zdrowie, bezpieczeństwo oraz długą żywotność produktów firmy Cezar przygotowaliśmy ogólne porady dotyczące montażu i użytkowania naszych wyrobów. W szczególności należy pamiętać, że:

For the sake of your health, safety and the long life of products by Cezar, we have prepared general advice on the installation and use of our products. In particular, remember the following:

Im Interesse Ihrer Gesundheit, Ihrer Sicherheit und der Langlebigkeit der Produkte von Cezar haben wir allgemeine Hinweise für die Montage und den Gebrauch unserer Produkte zusammengestellt. Dabei ist insbesondere Folgendes zu beachten:

- elementy wykończeniowe (listwy PVC, profile aluminiowe i mosiężne ze stali nierdzewnej) należy chronić przed zabrudzeniem materiałami mokrymi (beton, zaprawa, klej, fugi do płytek itp.) stosowanymi w przemyśle budowlanym, np.: w przypadku zabrudzenia należy niezwłocznie zmyć zanieczyszczenie czystą wodą,
- do przycinania profili metalowych nie stosować narzędzi mogących spowodować przegrzanie się materiału,
- do czyszczenia elementów metalowych nie należy stosować środków zawierających chlor lub inne substancje żrące,
- do montażu profili metalowych stosować tylko kleje montażowe i silikony neutralne chemicznie,
- do czyszczenia elementów z tworzyw sztucznych nie należy używać żadnych materiałów czyszczących zawierających rozpuszczalniki,
- elementy na których pozostały reszki etykiet, metek cenowych czy taśm należy zmyć szmatką nasączoną denaturatem,
- przed układaniem podkładów pod panele podłogowe posadzka powinna być oczyszczona i zabezpieczona przed wilgocią folią PE,
- do konserwacji podłóg drewnianych, drewnopochodnych, paneli ściennych oraz parapetów należy używać środków czyszczących przyjaznych dla środowiska naturalnego i nie wchodzących w reakcję z laminatem pokrywającym ich powierzchnię,
- do czyszczenia powierzchni trzeba stosować tkaninę o wysokim współczynniku pochłaniania wilgoci.
- finishing elements (PVC strips, aluminium and brass stainless steel profiles) must be protected from contamination with wet materials, such as concrete, mortar, adhesive, tile grout, etc. used in the construction industry, for example in the event of contamination, the contamination must be washed off immediately with clean water,
- do not use tools that could overheat the material when cutting metal profiles,
- do not use agents containing chlorine or other corrosive substances to clean metal parts,
- use only chemically neutral mounting adhesives and silicones for installation of metal profiles,
- do not use any cleaning materials containing solvents to clean plastic parts,
- any parts with residues of labels, price tags or tapes should be washed off with a cloth soaked in denatured alcohol,
- the floor for laying laminate flooring underlay should be cleaned and protected against moisture with a PE film before laying the underlay,
- for maintenance of wooden and wood-based floors, wall panels and window sills, use environmentally friendly cleaning agents and do not react with the laminate flooring,
- use a fabric with a high moisture-absorbing capacity to clean the surface.
- Veredelungselemente (PVC-Leisten, Aluminium- und Messingprofile aus rostfreiem Stahl) müssen vor Verunreinigung geschützt werden durch: Beton, Mörtel, Kleber, Fugenmörtel die in der Bauindustrie verwendet werden. Im Falle einer Verunreinigung muss diese sofort mit sauberem Wasser abgewaschen werden.
- Beim Schneiden von Metallprofilen keine Werkzeuge verwenden, die das Material überhitzen können,
- Chlorhaltige Mittel oder andere ätzende Stoffe sollten nicht zur Reinigung von Metallteilen verwendet werden.
- Für die Montage von Metallprofilen nur chemisch neutrale Montagekleber und Silikone verwenden.
- Zur Reinigung von Kunststoffteilen dürfen keine lösungsmittelhaltigen Reinigungsmittel verwendet werden.
- Eventuelle Rückstände von Etiketten, Preisschildern oder Klebebandern sollten mit einem in denaturiertem Alkohol getränkten Tuch abgewaschen werden.
- Der Boden sollte gereinigt und mit PE-Folie vor Feuchtigkeit geschützt werden, bevor die Unterlage für die Bodenplatten verlegt wird.
- Für die Pflege von Holz- und Holzwerkstoffböden, Wandplatten und Fensterbänken sind umweltfreundliche Reinigungsmittel zu verwenden, die nicht mit dem Laminat reagieren, das die Oberfläche bedeckt.
- Zur Reinigung der Oberfläche muss ein Gewebe mit hoher Feuchtigkeitsaufnahme-fähigkeit verwendet werden.

Pamiętaj, aby wszelkie prace budowlane były wykonywane przez wykwalifikowanych pracowników, którzy respektują przepisy prawa budowlanego. Producent nie ponosi odpowiedzialności za wyroby, które zostały użyte niezgodnie z przeznaczeniem, lub uległy uszkodzeniu w trakcie nieprawidłowego montażu.

Remember to make sure that any construction work is carried out by qualified workers who respect building regulations. The manufacturer shall not be held liable for the products which have been used other than for their intended purpose or damaged during improper installation.

Achten Sie darauf, dass alle Bauarbeiten von qualifizierten Arbeitskräften ausgeführt werden, die die Bauvorschriften einhalten. Der Hersteller haftet nicht für Produkte, die nicht bestimmungsgemäß verwendet wurden oder bei unsachgemäßer Installation beschädigt wurden.

**!** W czasie wykonywania pracy należy stosować się do ogólnych zasad bezpieczeństwa i higieny pracy. Uchroni to przed nieprzyjemnymi urazami oraz zapewni odpowiedni poziom bezpieczeństwa i pewny montaż!

**!** Observe the general EHS rules when carrying out work. This could protect you from injuries and ensure adequate safety and secure installation!

**!** Bei der Durchführung der Arbeiten müssen die allgemeinen Gesundheits- und Sicherheitsvorschriften eingehalten werden. So schützen Sie sich vor unangenehmen Verletzungen und sorgen für ausreichende Sicherheit und einen sicheren Einbau!

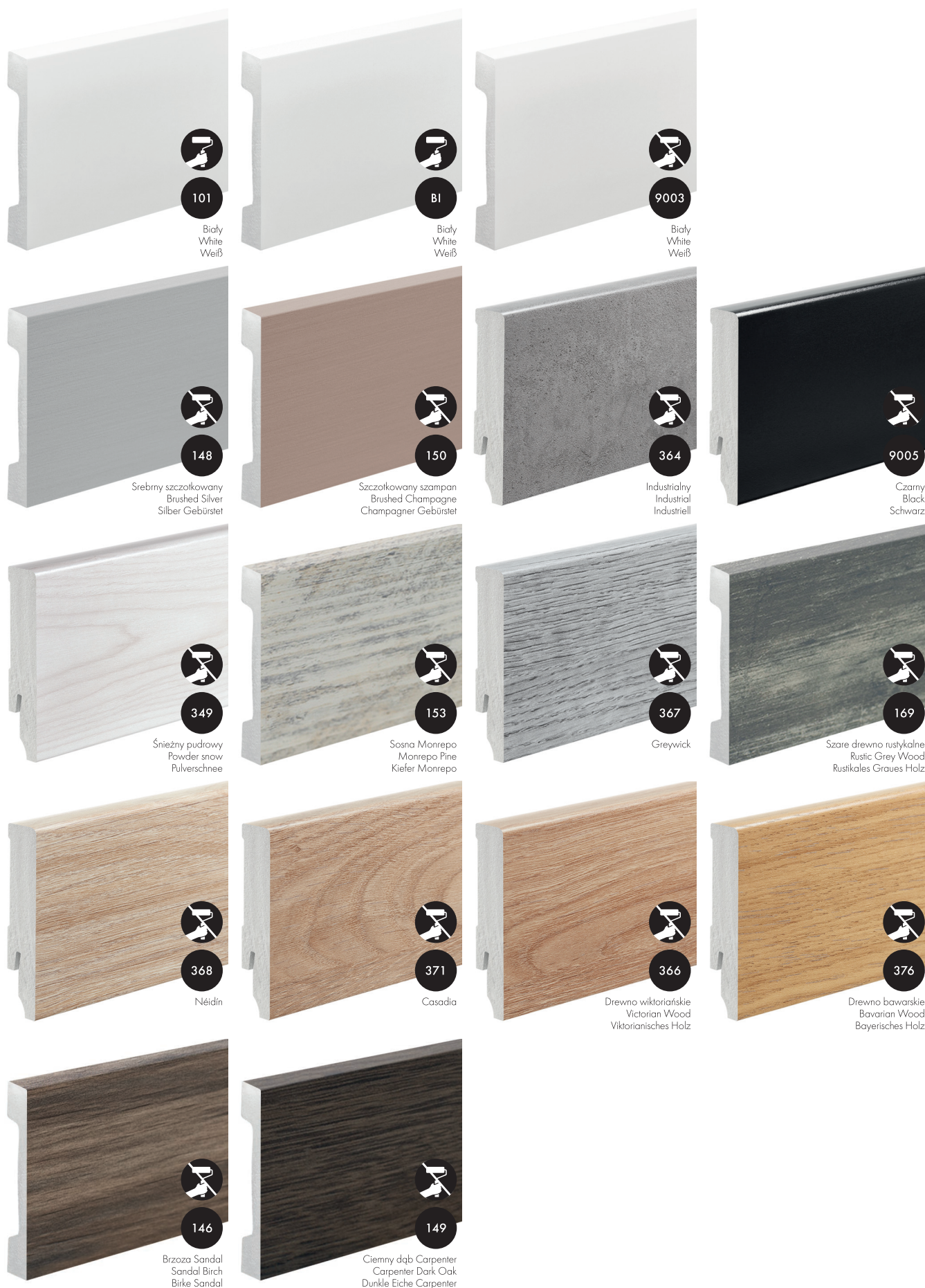
**i** Kolor wyrobu z różnych partii produkcyjnych może nieznacznie różnić się między sobą odcieniem.

**i** The colour of the products from different production batches may vary slightly in shade.

**i** Leichte Farbabweichungen zwischen den Produktionschargen sind möglich.



# KOLORYSTKA PRODUKTÓW COLOURS OF PRODUCTS PRODUKTFARBGEBUNG







## EFEKT WYKOŃCZENIA PRODUKTÓW TYPES OF PRODUCT FINISHES OBERFLÄCHENFINISH DER PRODUKTE



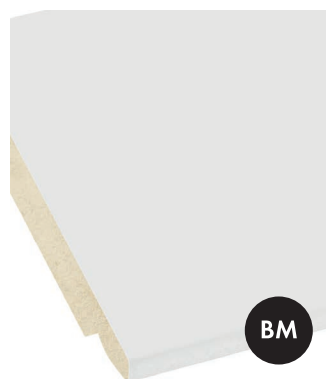
Lakier satynowy  
Satin lacquer  
Lack satiniert



Lakier matowy  
Matt lacquer  
Matlackierung



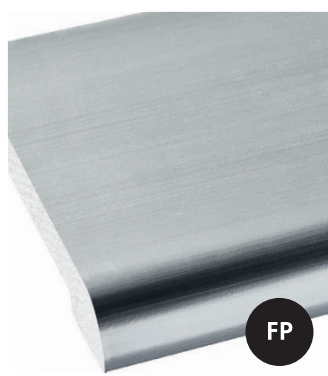
Wykończenie surowe  
Raw finish  
Rohe Oberfläche



Produkt barwiony w masie - matowy  
Full body coloured product - matt  
Einfarbiges Produkt - matt



Folia matowa  
Matt foil  
Folie matt



Folia połysk  
Gloss foil  
Folie glänzend



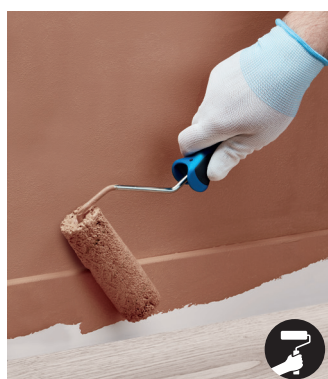
Okleina półmat  
Foil with wood structure  
Folie mit Holzstruktur



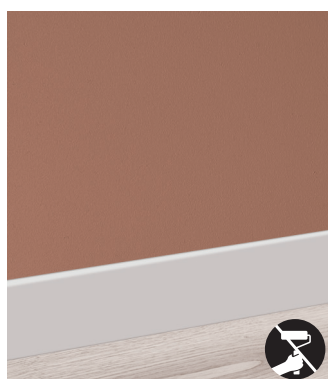
## OPCJE MALOWANIA PRODUKTÓW PAINTING OPTIONS LACKIEROPTIONEN FÜR PRODUKTE



## LIGHTBLOCKER®



Produkt można malować razem ze ścianą lub sufitem na dowolny kolor farbami akrylowymi lub lateksowymi. The product can be painted together with the wall or ceiling in any colour using acrylic or latex paints. Das Produkt kann zusammen mit der Wand oder der Decke in jeder beliebigen Farbe mit Acryl- oder Latexfarben gestrichen werden.



Gotowy produkt — nie wymaga malowania. Ready to use — no painting required. Gebrauchsfertig — kein Anstrich erforderlich.



Produkt z technologią **LIGHTBLOCKER®** — warstwą uniemożliwiającą przenikanie światła przez produkt. Product with **LIGHTBLOCKER®** technology — a light-blocking layer that prevents light from passing through the product. Produkt mit **LIGHTBLOCKER®**-Technologie — eine lichtsperrende Schicht, die das Durchscheinen von Licht durch das Produkt verhindert.



Produkt bez technologii **LIGHTBLOCKER®** — światło przenika przez listwę. Product without **LIGHTBLOCKER®** technology — light can pass through the moulding. Produkt ohne **LIGHTBLOCKER®**-Technologie — Licht kann durch die Leiste hindurchscheinen.





**9**

LISTWY PRZYPODŁOGOWE  
SKIRTING BOARDS  
SOCKELLEISTEN



**92**

NISZE  
NICHES  
NISCHEN



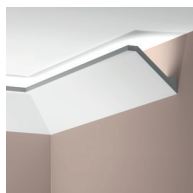
**21**

LISTWY GZYMSOWE  
CORNICER MOULDINGS  
GESIMSLEISTEN



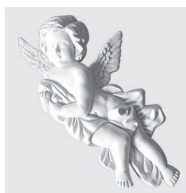
**92**

WSPORNIKI  
BRACKETS  
STUCKKONSOLEN



**44**

LISTWY OŚWIETLENIOWE  
LIGHTING MOULDINGS  
LICHTLEISTEN



**92**

DEKORACJE  
DECORATIONS  
DEKORATIONEN



**48**

LISTWY KARNISZOWE  
CURTAIN MOULDINGS  
GARDINENLEISTE



**94**

KOLUMNY  
COLUMNS  
DECORSÄULEN



**51**

LISTWY NAŚCIENNE  
WALL MOULDINGS  
WANDLEISTEN



**96**

AKCESORIA MONTAŻOWE  
INSTALLATION ACCESSORIES  
MONTAGEZUBEHÖR



**66**

NAROŻNIKI DO LISTEW NAŚCIENNYCH  
WALL CORNER MOULDINGS  
DEKORATIVE ECKSTÜCKE FÜR WANDLEISTEN



**97**

EKSPOZYTORY  
DISPLAYS  
VERKAUFSDISPLAYS



**68**

PANELE ŚCIENNE  
WALL PANELS  
WANDPANELEE



**86**

OBRAMOWANIA DRZWI I OKIEN  
DOOR AND WINDOW FRAMES  
TÜREN UND FENSTERRAHMEN



**90**

DEKORACJE SUFITOWE  
CEILING ORNAMENTS  
DECKENDEKORATIONEN



LNG-22K/101

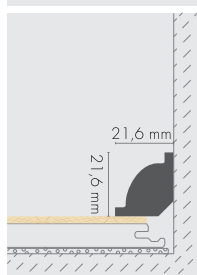
## **LISTWY PRZYPODŁOGOWE SKIRTING BOARDS SOCKELLEISTEN**

LPC-24/ 101





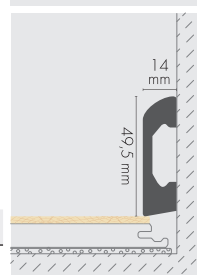
## LPC-01 XPS



LPC-01		101	LM	2,44 m	898914	90
		9003	LS	2,44 m	862342	90



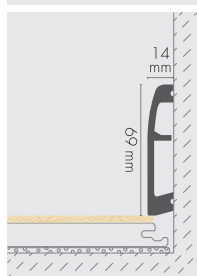
## LPC-04 XPS



LPC-04		101	LM	2,44 m	898945	40
		9003	LS	2,44 m	862359	40



## LPC-06 XPS

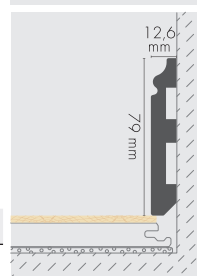


LPC-06		101	LM	2,44 m	898969	30
		9003	LS	2,44 m	862366	30
		148	FP	2,44 m	898976**	30
		150	FP	2,44 m	898983	30

\*\* Na zamówienie/ On request/ Auf Anfrage \*\*\* Outlet



## LPC-07 XPS



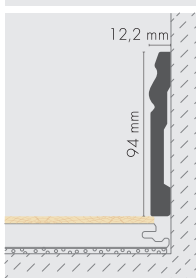
LPC-07		101	LM	2,44 m	898990	25
		9003	LS	2,44 m	862373	25

(LM) Lakier matowy podkład/ Matt lacquer primer/ Matte Lackgrundierung, (LS) Lakier satynowy/ Satin lacquer/ Lack satiniert, (FP) Folia polysk/ Glass foil/ Folie glänzend, (FM) Folia matowa/ Matt foil/ Folie matt





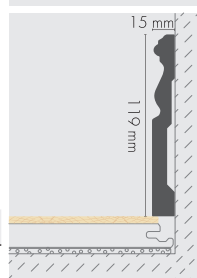
## LPC-08 XPS



LPC-08		101	LM	2,44 m	899003	23
		9003	LS	2,44 m	862380	23



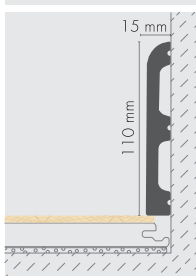
## LPC-09 XPS



LPC-09		101	LM	2,44 m	899010	16
		9003	LS	2,44 m	862397	16



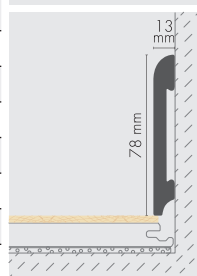
## LPC-10 XPS



LPC-10		101	LM	2,44 m	654060	16
		9003	LS	2,44 m	654053	16



## LPC-11 XPS

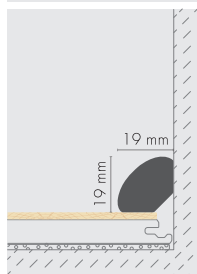


LPC-11		101	LM	2,44 m	899027	28
		9003	LS	2,44 m	862403	28
		146	FM	2,44 m	661679**	28
		148	FP	2,44 m	899034	28
		149	FM	2,44 m	661686**	28
		150	FP	2,44 m	899041	28
		153	FM	2,44 m	661716	28
		169	FM	2,44 m	668326**	28

\*\* Na zamówienie/ On request/ Auf Anfrage



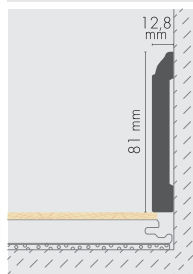
## LPC-12 XPS



LPC-12	101	LM	2,44 m	899058	100
--------	-----	----	--------	--------	-----



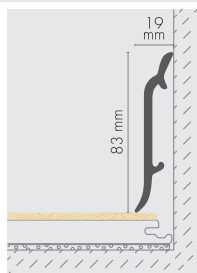
## LPC-15 XPS



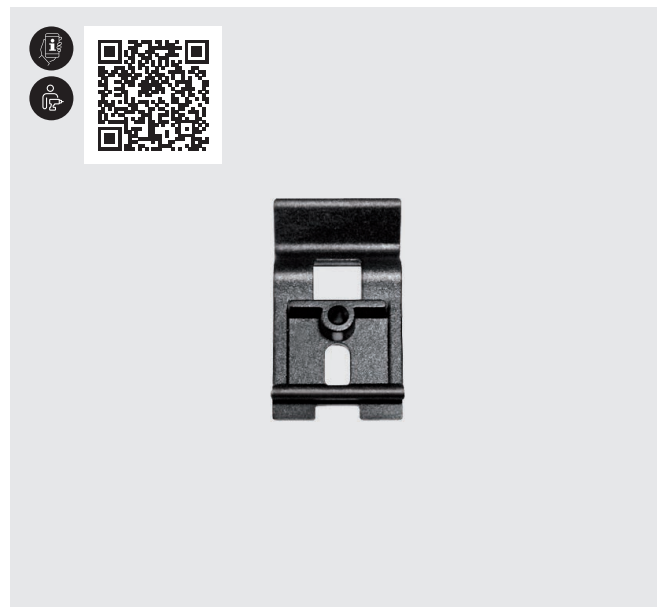
LPC-15	101	LM	2,44 m	899089	29
	9003	LS	2,44 m	862427	29



## LPC-16 XPS



LPC-16	101	LM	2,44 m	899096	27
--------	-----	----	--------	--------	----



### KLIPS MONTAŻOWY INSTALLATION CLIPS MONTAGECLIP

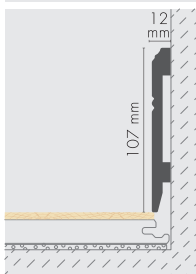
#### LPC-16

899102	5000
--------	------





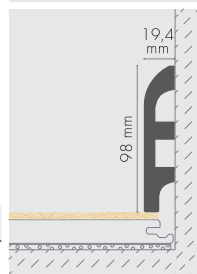
## LPC-18 XPS



LPC-18		101	LM	2,44 m	899119	25
		9003	LS	2,44 m	862441	25



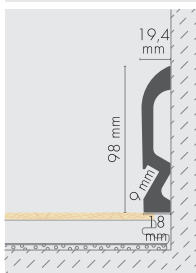
## LPC-19 XPS



LPC-18		101	LM	2,44 m	899126	16
		9003	LS	2,44 m	862458	16



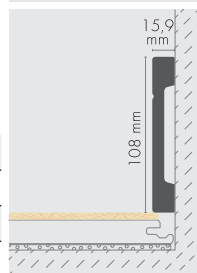
## LPC-19LE XPS



LPC-19LE		101	LM	2,44 m	654978	16



## LPC-20 XPS

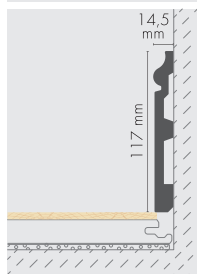


LPC-20		101	LM	2,44 m	899133	15
		9003	LS	2,44 m	862465	15
		148	FP	2,44 m	899140	15
		150	FP	2,44 m	899157	15





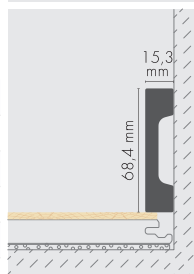
## LPC-22 XPS



LPC-22	101	LM	2,44 m	899171	16	
	9003	LS	2,44 m	862472	16	



## LPC-23 XPS

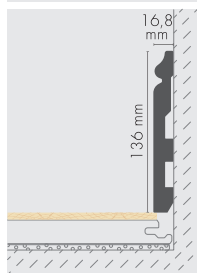


LPC-23	101	LM	2,44 m	899188	27	
	9003	LS	2,44 m	862489	27	
	148	FP	2,44 m	899195	27	
	150	FP	2,00 m	863868**	27	
	150	FP	2,44 m	899201	27	

\*\* Na zamówienie/ On request/ Auf Anfrage



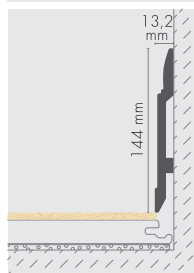
## LPC-24 XPS



LPC-24	101	LM	2,44 m	899218	12	
	9003	LS	2,44 m	862496	12	



## LPC-25 XPS

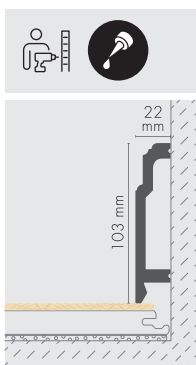


LPC-25	101	LM	2,44 m	899225	15	
	9003	LS	2,44 m	862502	15	

(LM) Lakier matowy podkład/ Matt lacquer primer/ Matte Lackgrundierung, (LS) Lakier satynowy/ Satin lacquer/ Lack satiniert, (FP) Folja polysk/ Glass foil/ Folie glänzend



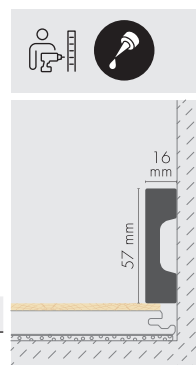
**LPC-26** XPS



LPC-26	101	LM	2,44 m	899232	14	



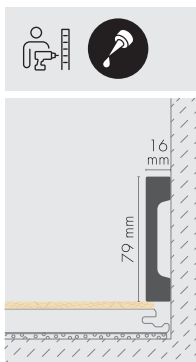
**LPC-27** XPS



LPC-27	101	LM	2,44 m	863110	30	
	9003	LS	2,44 m	863141	30	



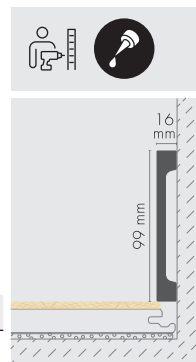
**LPC-28** XPS



LPC-28	101	LM	2,44 m	863127	23	
	9003	LS	2,44 m	863158	23	



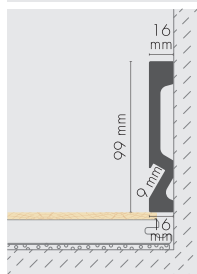
**LPC-29** XPS



LPC-29	101	LM	2,44 m	863219	18	
	9003	LS	2,44 m	863226	18	



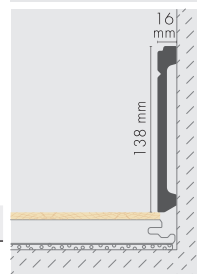
## LPC-29LE XPS



LPC-29LE		101	LM	2,44 m	654954	18



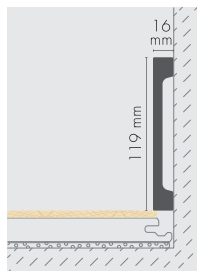
## LPC-30 XPS



LPC-30		101	LM	2,44 m	863271	14
		9003	LS	2,44 m	863288	14



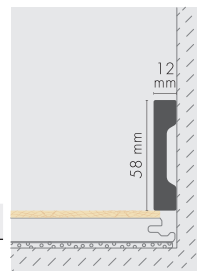
## LPC-31 XPS



LPC-31		101	LM	2,44 m	863608	15
		9003	LS	2,44 m	863622	15



## LPC-32 XPS

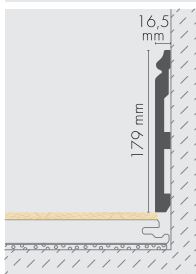


LPC-32		101	LM	2,44 m	617324	42
		9003	LS	2,44 m	617331	42





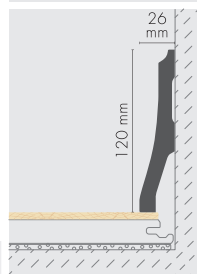
**LPC-33** XPS



LPC-33	101	LM	2,44 m	863721	10



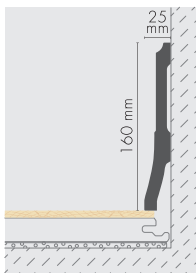
**LPC-34** XPS



LPC-34	101	LM	2,44 m	611094	14



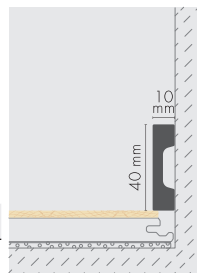
**LPC-35** XPS



LPC-35	101	LM	2,44 m	611155	12



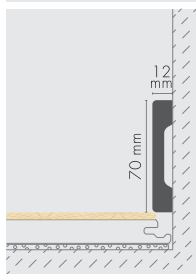
**LPC-36** XPS



LPC-36	101	LM	2,44 m	602597	70
	9003	LS	2,44 m	602603	70



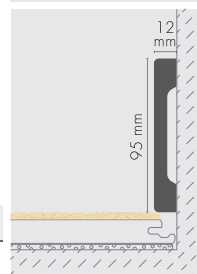
## LPC-37 XPS



LPC-37		101	LM	2,44 m	611407	33
		9003	LS	2,44 m	611438	33



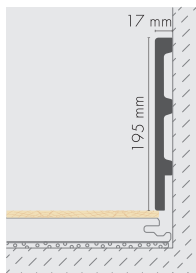
## LPC-38 XPS



LPC-38		101	LM	2,44 m	611445	24
		9003	LS	2,44 m	611452	24



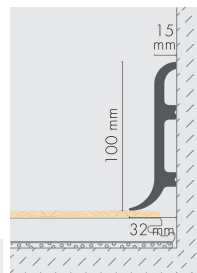
## LPC-39 XPS



LPC-39		101	LM	2,44 m	611933	10
		9003	LS	2,44 m	611940	10



## LPC-40 XPS



LPC-40		101	LM	2,44 m	602726	14

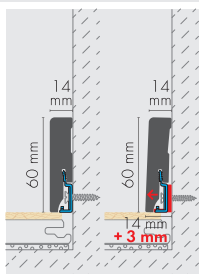
(LM) Lakier matowy podkład/ Matt lacquer primer/ Matte Lackgrundierung, (LS) Lakier satynowy/ Satin lacquer/ Lack satiniert



## LPC-50 XPS



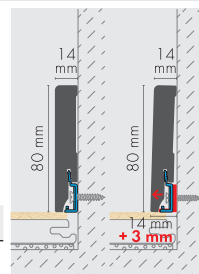
LPC-50	101	LM	2,44 m	668364	33	
	9003	LS	2,44 m	668470	33	



## LPC-51 XPS



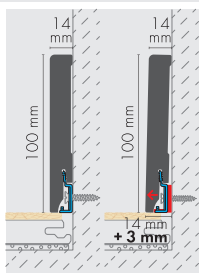
LPC-51	101	LM	2,44 m	668500	29	
	9003	LS	2,44 m	668692	29	



## LPC-52 XPS



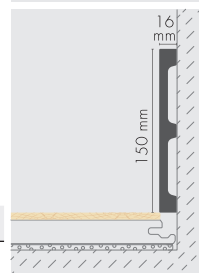
LPC-52	101	LM	2,44 m	668708	22	
	9003	LS	2,44 m	668814	22	



## LPC-68 XPS



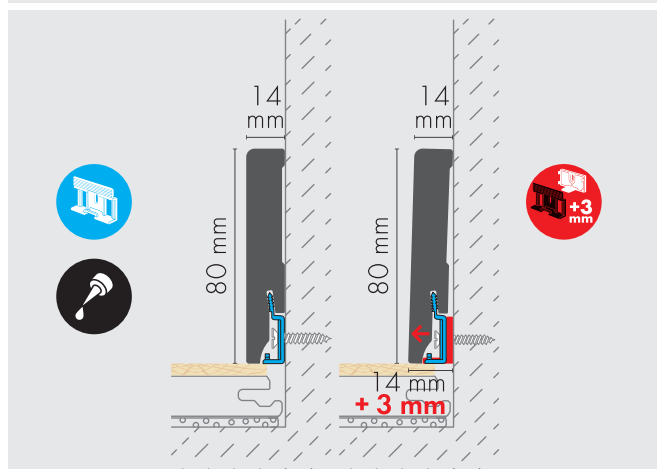
LPC-68	101	LM	2,44 m	849022	12	
	9003	LS	2,44 m	853548	12	







## Elegance® Decor XPS



Okleina ze strukturą drewna  
Wood-textured laminate  
Holzstruktur-Laminat

Listwy przypodłogowe/ Skirting boards/ Sockelleisten

20

LPC-51		349	OT	2,20 m	845994	10
		364	OT	2,20 m	846014	10
		366	OT	2,20 m	846007	10
		367	OT	2,20 m	845987	10
		368	OT	2,20 m	845970	10
		371	OT	2,20 m	845956	10
		376	OT	2,20 m	845963	10
		9005	OT	2,20 m	846045	10

(OT) Okleina półmat/ Foil with wood structure/ Folie mit Holzstruktur





LNG-09/ 101

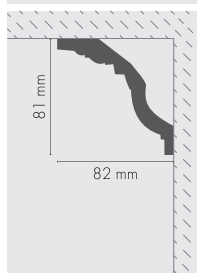
LNG-14/ 101









**LISTWY GZYSOWE  
CORNICE MOULDINGS  
GESIMSLEISTEN**





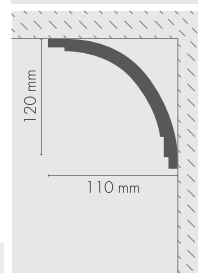
## LGG-01 PU LGG-01F




						
LGG-01		101	S	2,40 m	899447	35
LGG-01F		101	S	2,40 m	899454***	36



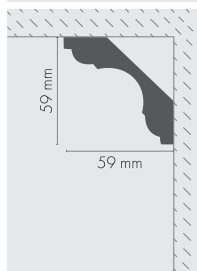
## LGG-02 PU











						
LGG-02		101	S	2,40 m	899461	20



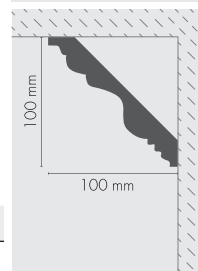
## LGG-03 PU LGG-03F











						
LGG-03		101	S	2,40 m	899478	55
LGG-03F		101	S	2,40 m	899485***	50



## LGG-04 PU LGG-04F

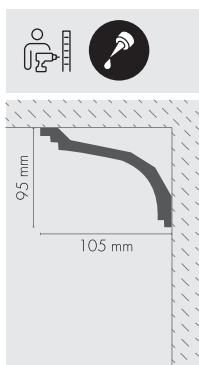


						
LGG-04		101	S	2,40 m	899492	30
LGG-04F		101	S	2,40 m	899508	10





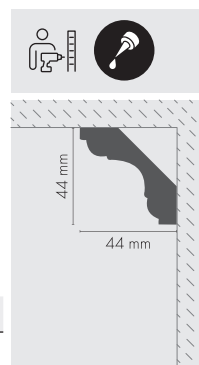
**LGG-05** **PU**



LGG-05		101	S	2,40 m	899515	20



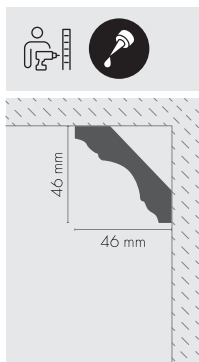
**LGG-06** **PU**  
**LGG-06F**



LGG-06		101	S	2,40 m	899522	60
LGG-06F		101	S	2,40 m	899539***	27



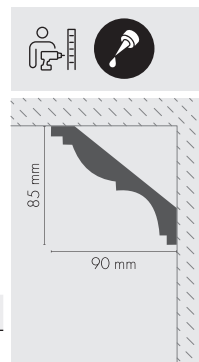
**LGG-07** **PU**  
**LGG-07F**



LGG-07		101	S	2,40 m	899546	30
LGG-07F		101	S	2,40 m	899553***	45



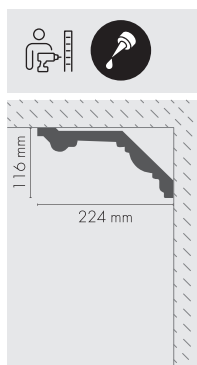
**LGG-08** **PU**  
**LGG-08F**



LGG-08		101	S	2,40 m	899560	30
LGG-08F		101	S	2,40 m	899577***	30



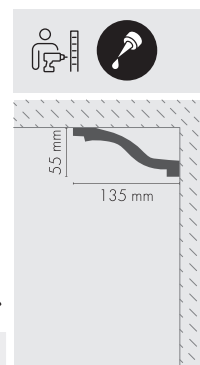
**LGG-09** PU



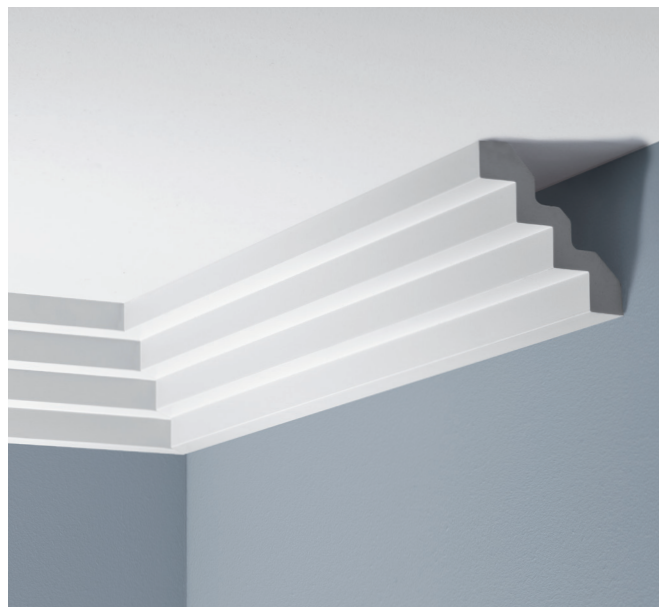
LGG-09	101	S	2,40 m	899584	12



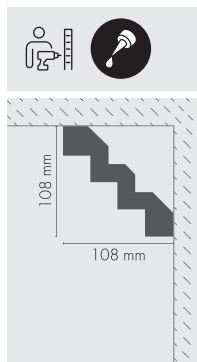
**LGG-10** PU



LGG-10	101	S	2,40 m	899591	5



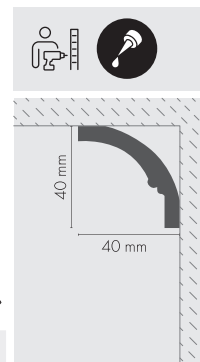
**LGG-11** PU



LGG-11	101	S	2,44 m	899607	15



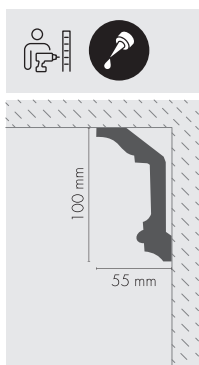
**LGG-12** PU



LGG-12	101	S	2,44 m	899614	60



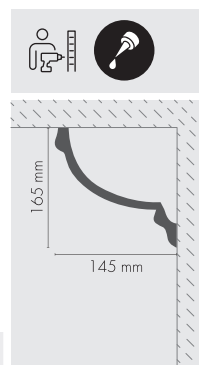
**LGG-13** **PU**



LGG-13	101	S	2,40 m	899621	10
--------	-----	---	--------	--------	----



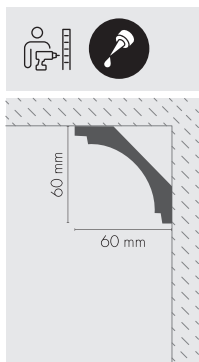
**LGG-14** **PU**



LGG-14	101	S	2,40 m	899638	10
--------	-----	---	--------	--------	----



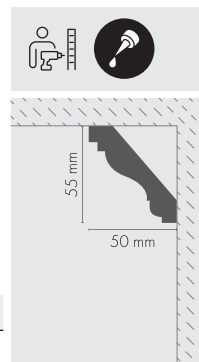
**LGG-15** **PU**  
**LGG-15F**



LGG-15	101	S	2,40 m	899645	60
LGG-15F	101	S	2,40 m	899652	55



**LGG-16** **PU**  
**LGG-16F**



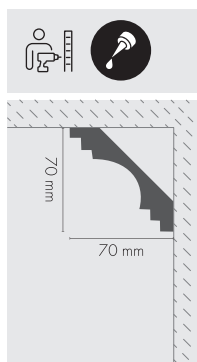
LGG-16	101	S	2,44 m	899669	66
LGG-16F	101	S	2,44 m	899676***	60





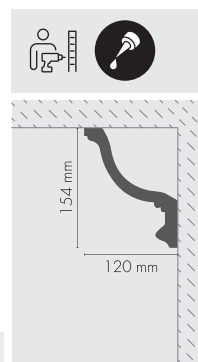
**LGG-17** **PU**  
**LGG-17F**

LGG-17		101	S	2,40 m	899683	35
LGG-17F		101	S	2,40 m	899690***	38



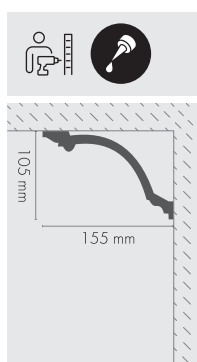
**LGG-18** **PU**

LGG-18		101	S	2,40 m	899706	5



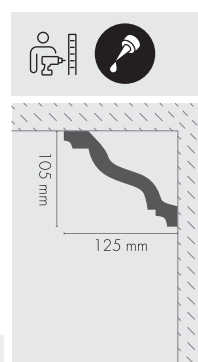
**LGG-19** **PU**

LGG-19		101	S	2,40 m	899713	14



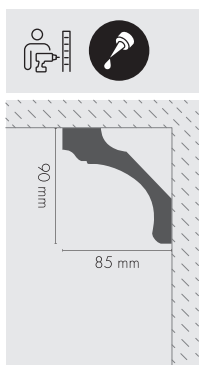
**LGG-20** **PU**

LGG-20		101	S	2,40 m	899720	15





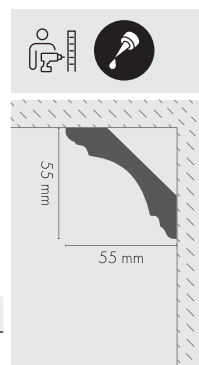
**LGG-21** PU



LGG-21		101	S	2,40 m	899737	30



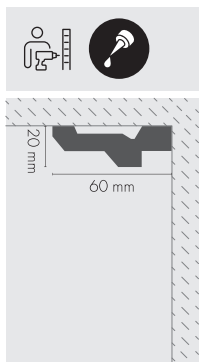
**LGG-22** PU  
**LGG-22F**



LGG-22		101	S	2,40 m	899744	10
LGG-22F		101	S	2,40 m	899751***	30



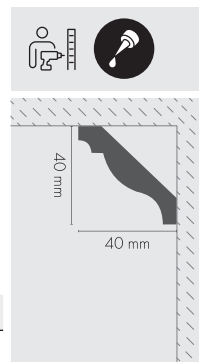
**LGG-23** PU



LGG-23		101	S	2,44 m	899768	60



**LGG-24** PU  
**LGG-24F**



LGG-24		101	S	2,40 m	899775	55
LGG-24F		101	S	2,40 m	899782***	56



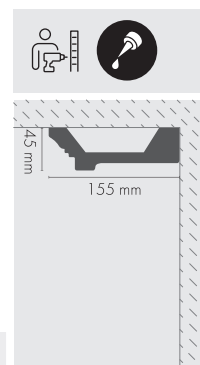
**LGG-25** **PU**



LGG-25	101	S	2,40 m	899799	15



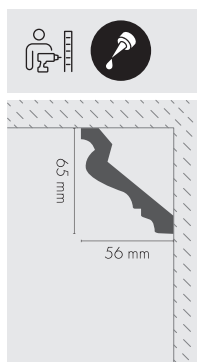
**LGG-26** **PU**



LGG-26	101	S	2,44 m	899805	10



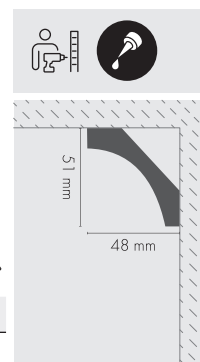
**LGG-27** **PU**  
**LGG-27F**



LGG-27	101	S	2,40 m	899812	40
LGG-27F	101	S	2,40 m	899829***	45



**LGG-28** **PU**  
**LGG-28F**

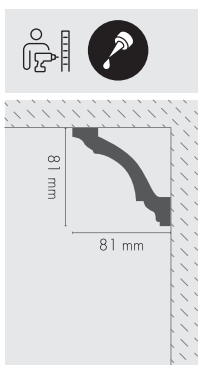


LGG-28	101	S	2,40 m	899836	50
LGG-28F	101	S	2,40 m	899843***	70





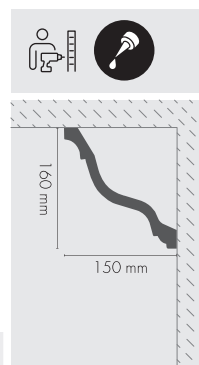
**LGG-29** **PU**  
**LGG-29F**



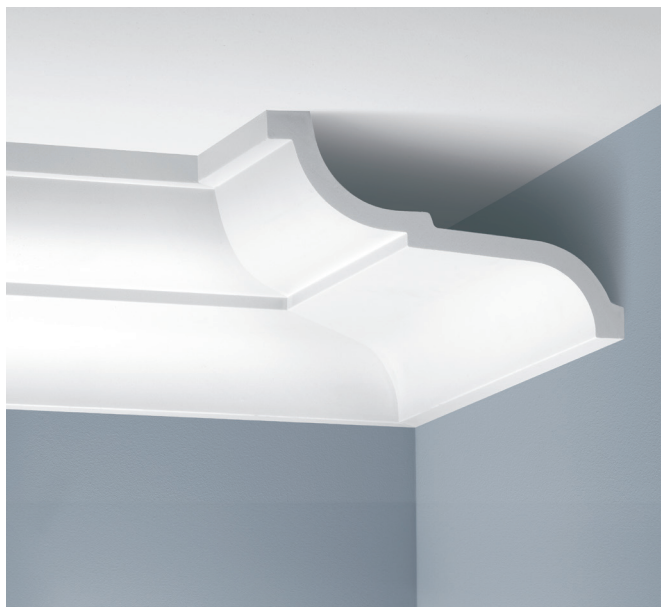
LGG-29		101	S	2,40 m	899850	35
LGG-29F		101	S	2,40 m	899867***	40



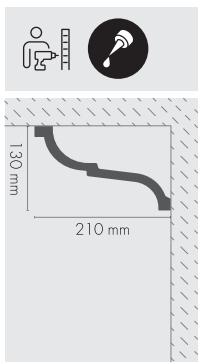
**LGG-30** **PU**



LGG-30		101	S	2,44 m	899874	15



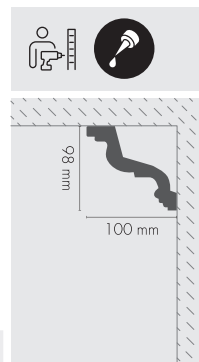
**LGG-31** **PU**



LGG-31		101	S	2,44 m	899881	5



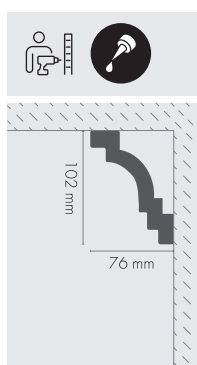
**LGG-32** **PU**



LGG-32		101	S	2,40 m	881992	5



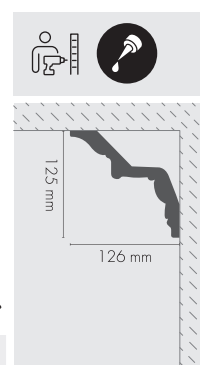
**LGG-33** PU



LGG-33		101	S	2,40 m	882005	40



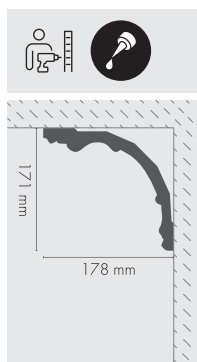
**LGG-34** PU



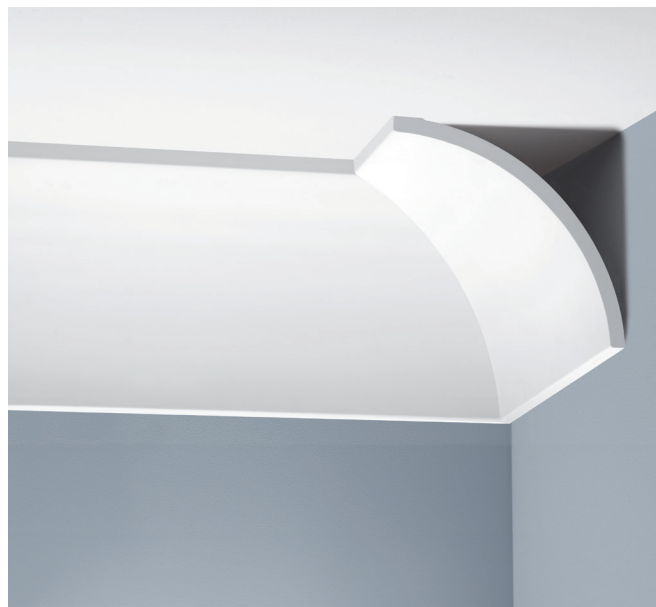
LGG-34		101	S	2,40 m	882012	14



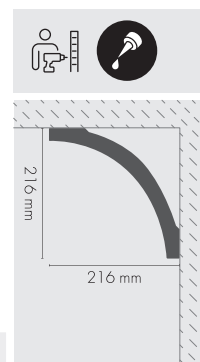
**LGG-35** PU



LGG-35		101	S	2,40 m	861031	6



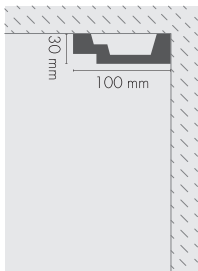
**LGG-36** PU



LGG-36		101	S	2,44 m	861048	10



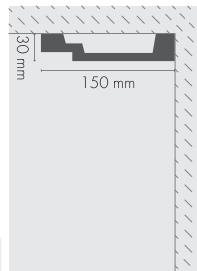
**LNG-22K** **PU**



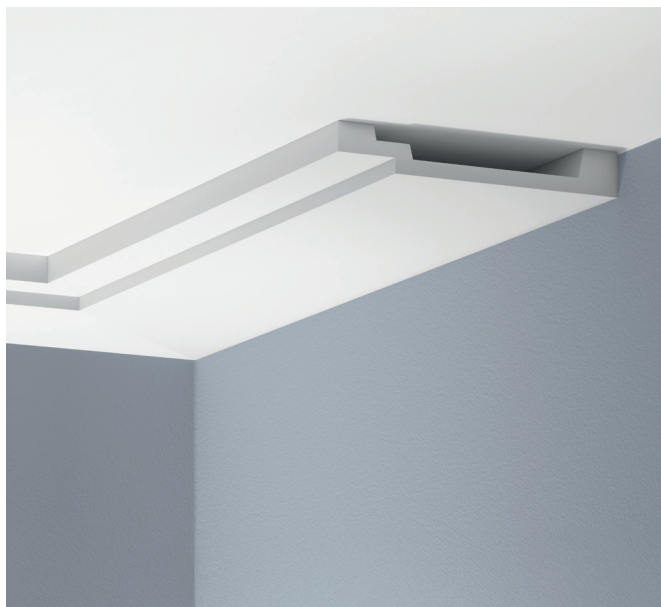
LNG-22K	101	BM	2,40 m	840227	10



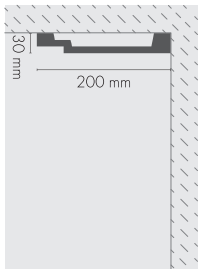
**LNG-23K** **PU**



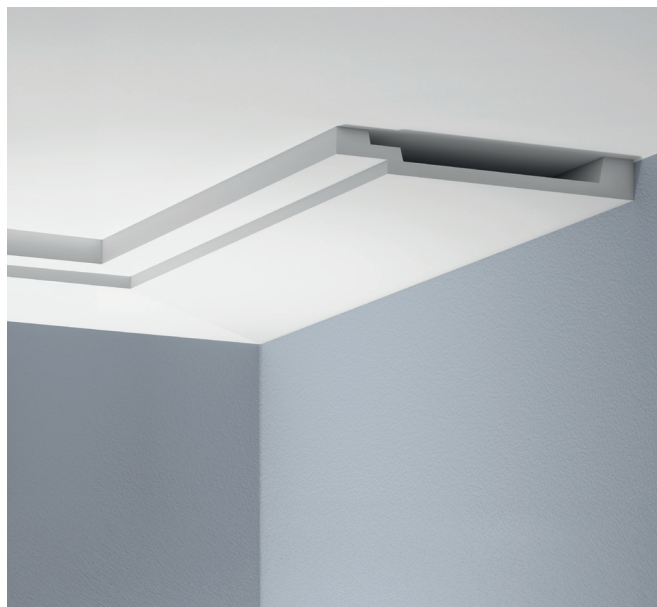
LNG-23K	101	BM	2,40 m	840234	15



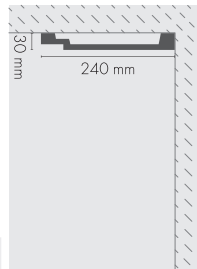
**LNG-24K** **PU**



LNG-24K	101	BM	2,40 m	840241	15



**LNG-25K** **PU**



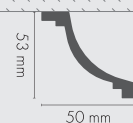
LNG-25K	101	BM	2,40 m	840296	5





## LGG-38K XPS

## LGG-38KX PU

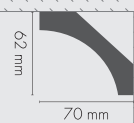


LGG-38K		101	BM	2,44 m	839702	55
LGG-38KX		101	BM	2,44 m	840135	45



## LGG-39K PU

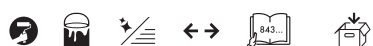
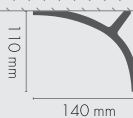
## LGG-39KX



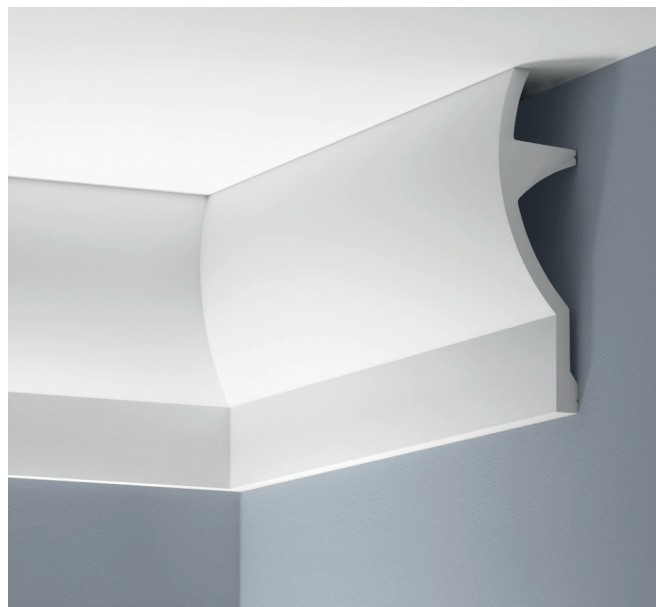
LGG-39K		101	BM	2,44 m	839719	40
LGG-39KX		101	BM	2,44 m	840142	10



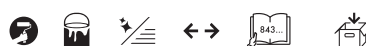
## LGG-40K PU



LGG-40K		101	BM	2,44 m	839573	10
---------	--	-----	----	--------	--------	----



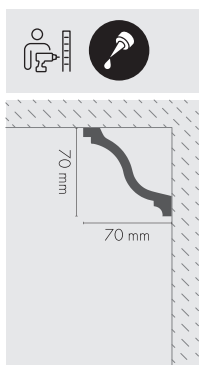
## LGG-41K PU



LGG-41K		101	BM	2,44 m	840159	5
---------	--	-----	----	--------	--------	---



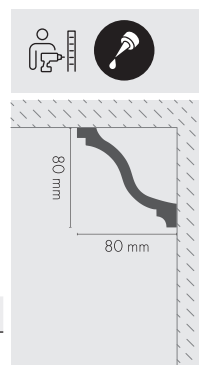
**LGG-42K** **PU**



LGG-42K		101	BM	2,40 m	839771	40



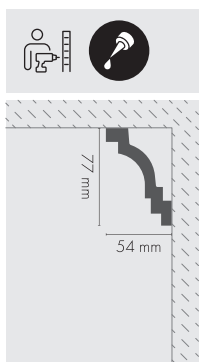
**LGG-43K** **PU**  
**LGG-43KX**



LGG-43K		101	BM	2,44 m	839795	48
LGG-43KX		101	BM	2,44 m	840173	50



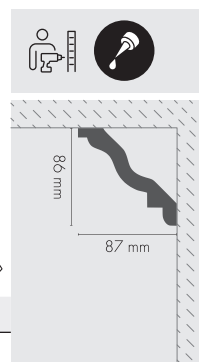
**LGG-44K** **PU**  
**LGG-44KX**



LGG-44K		101	BM	2,40 m	839788	40
LGG-44KX		101	BM	2,40 m	840166	5



**LGG-45K** **XPS**  
**LGG-45KX** **PU**

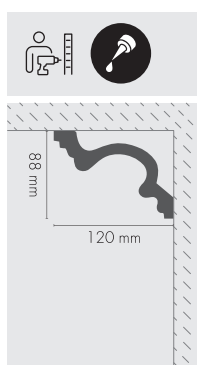


LGG-45K		101	BM	2,44 m	839801	10
LGG-45KX		101	BM	2,44 m	840180**	5





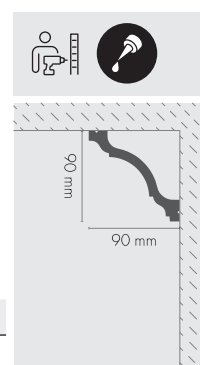
**LGG-46K** **PU**



LGG-46K	101	BM	2,40 m	839818	15



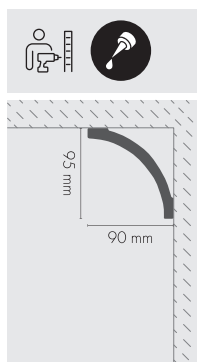
**LGG-47K** **PU**  
**LGG-47KX**



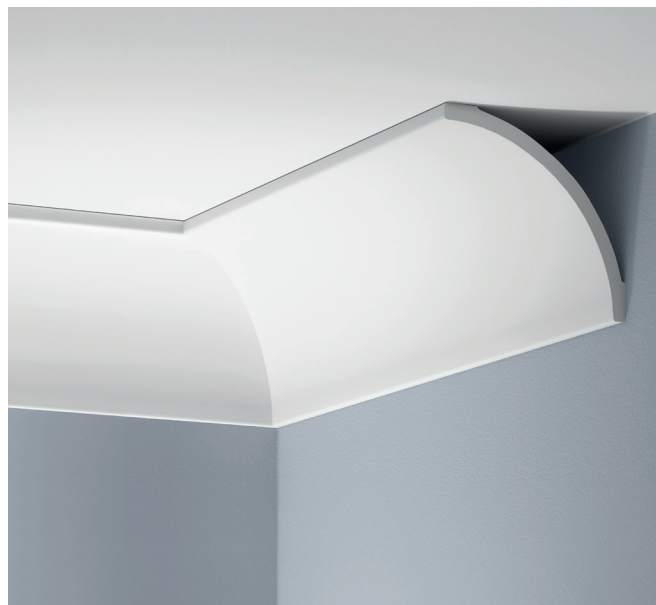
LGG-47K	101	BM	2,44 m	839825	40
LGG-47KX	101	BM	2,44 m	840197	5



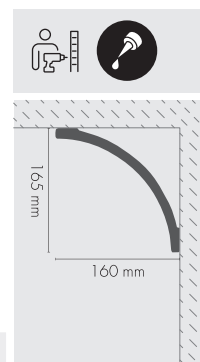
**LGG-48K** **PU**



LGG-48K	101	BM	2,44 m	839849	40



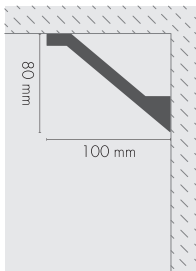
**LGG-49K** **PU**



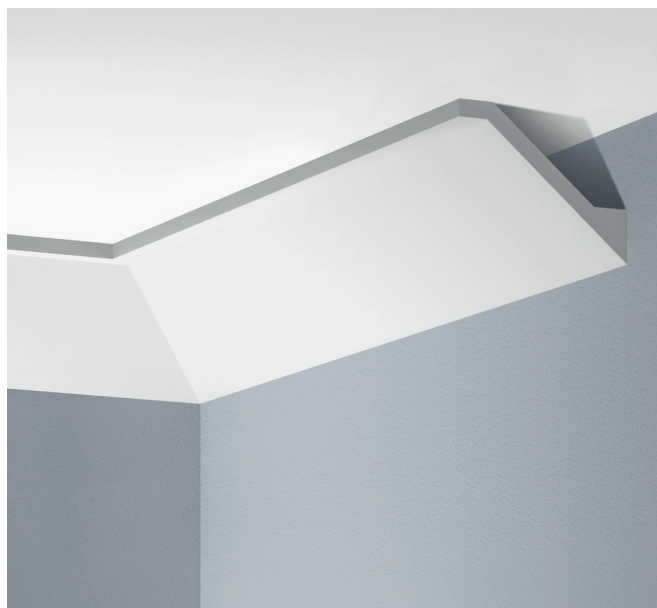
LGG-49K	101	BM	2,44 m	839672	5



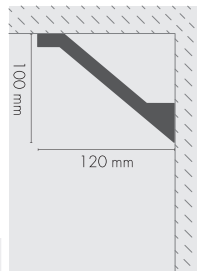
**LGG-50K** PU



LGG-50K	101	BM	2,40 m	839504	10



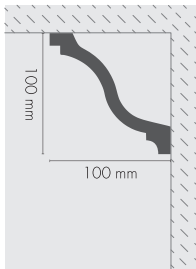
**LGG-51K** PU



LGG-51K	101	BM	2,40 m	839580	10



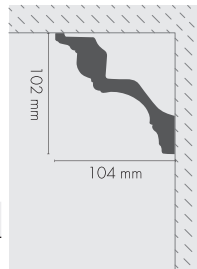
**LGG-52K** PU



LGG-52K	101	BM	2,44 m	839498	30

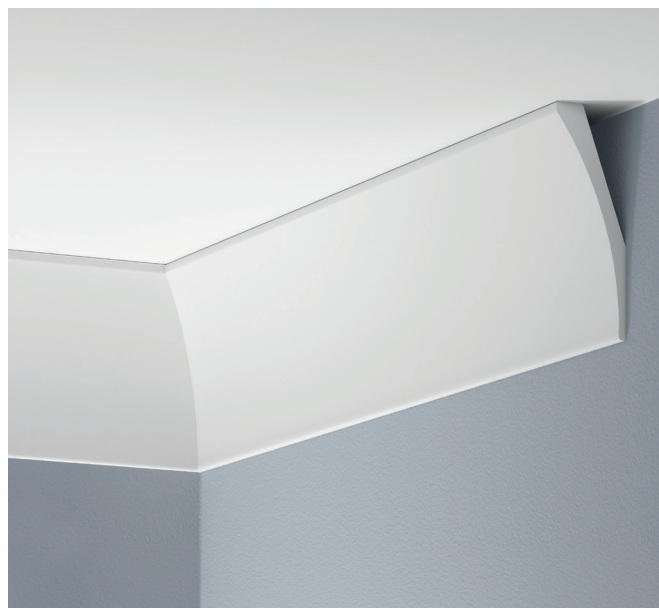


**LGG-53K** PU  
**LGG-53KX** PU

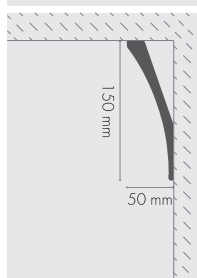


LGG-53K	101	BM	2,40 m	840111	16
LGG-53KX	101	BM	2,40 m	840128	16





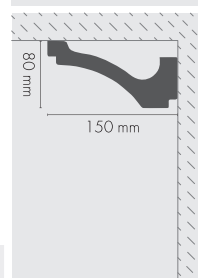
## LGG-54K PU



LGG-54K	101	BM	2,44 m	839603	40



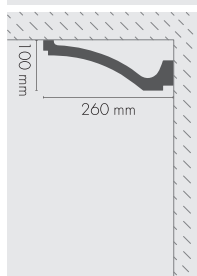
## LGG-55K PU



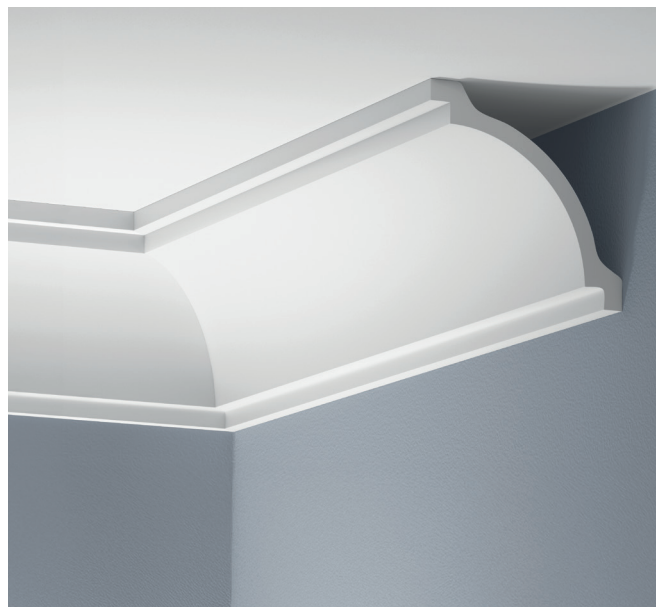
LGG-55K	101	BM	2,40 m	839610	10



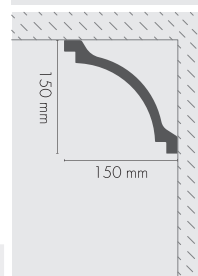
## LGG-56K PU



LGG-56K	101	BM	2,40 m	839696	10



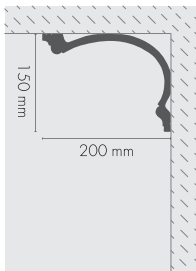
## LGG-57K PU



LGG-57K	101	BM	2,40 m	839597	16



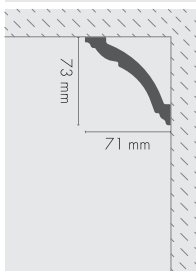
**LGG-58K** **PU**



LGG-58K 101 BM 2,44 m 839689 10



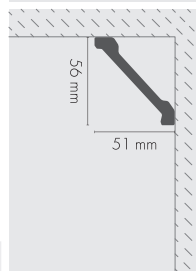
**LOC-05** **XPS**



LOC-05 101 LM 2,44 m 898884 18



**LOC-06** **XPS**

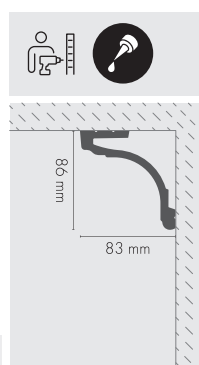


LOC-06 101 LM 2,44 m 898891 36





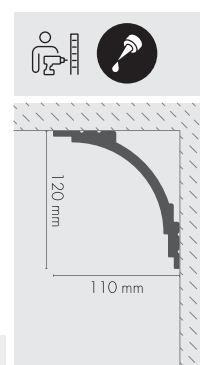
**LK-05** XPS



LK-05	101	LM	2,44 m	830488	10
-------	-----	----	--------	--------	----



**LK-06** XPS

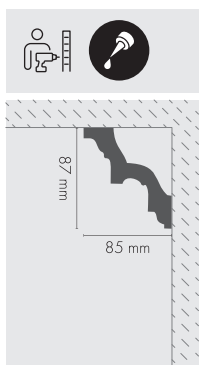


LK-06	101	LM	2,44 m	848698	6
-------	-----	----	--------	--------	---





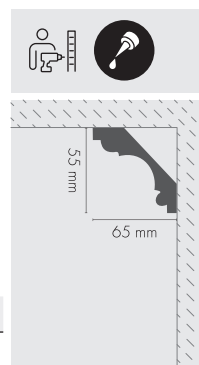
**LGZ-01** PU



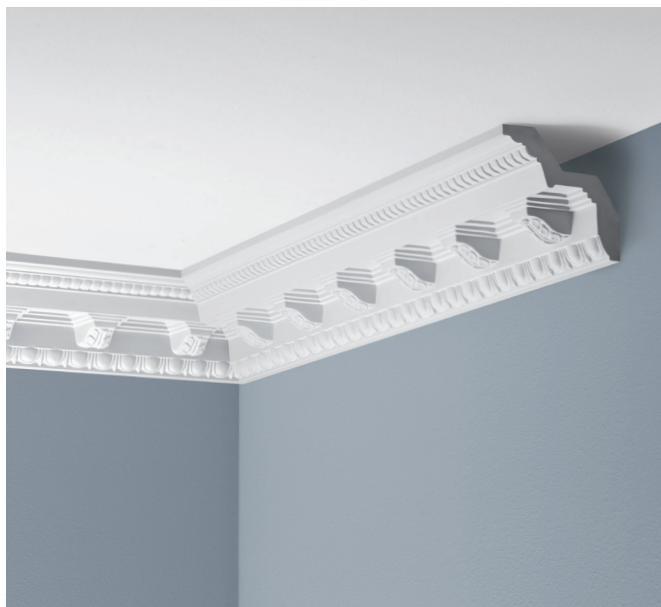
LGZ-01		101	S	2,40 m	899249	10



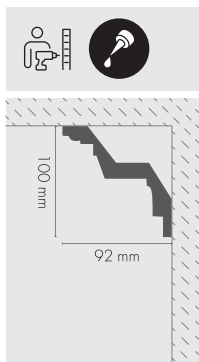
**LGZ-02** PU  
**LGZ-02F**



LGZ-02		101	S	2,40 m	899256	54
LGZ-02F		101	S	2,40 m	899263***	30



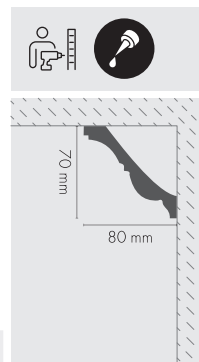
**LGZ-03** PU



LGZ-03		101	S	2,40 m	899270	5



**LGZ-04** PU

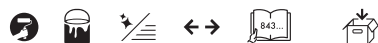
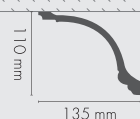


LGZ-04		101	S	2,40 m	899287	5





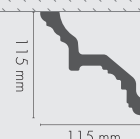
**LGZ-05** **PU**  
**LGZ-05F**



LGZ-05		101	S	2,40 m	899294	15
LGZ-05F		101	S	2,40 m	899300***	15



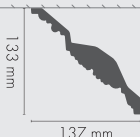
**LGZ-06** **PU**



LGZ-06		101	S	2,40 m	899317	15
--------	--	-----	---	--------	--------	----



**LGZ-07** **PU**



LGZ-07		101	S	2,40 m	899324	15
--------	--	-----	---	--------	--------	----



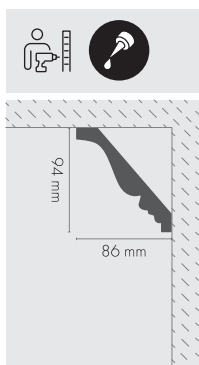
**LGZ-08** **PU**



LGZ-08		101	S	2,40 m	899331	25
--------	--	-----	---	--------	--------	----



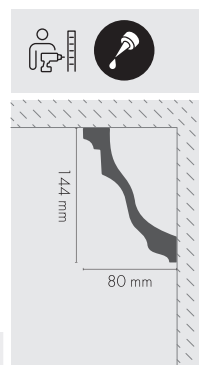
**LGZ-09** **PU**  
**LGZ-09F**



LGZ-09		101	S	2,40 m	899348	15
LGZ-09F		101	S	2,40 m	899355***	30



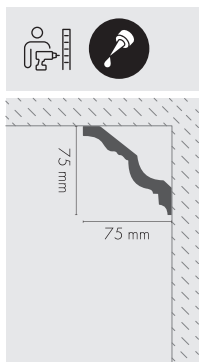
**LGZ-10** **PU**



LGZ-10		101	S	2,40 m	899362	25



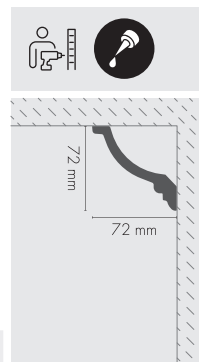
**LGZ-11** **PU**  
**LGZ-11F**



LGZ-11		101	S	2,40 m	899379	50
LGZ-11F		101	S	2,40 m	899386***	28



**LGZ-12** **PU**

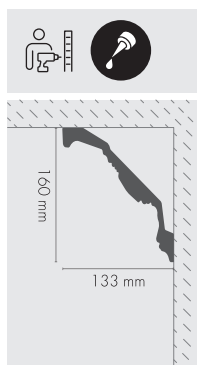


LGZ-12		101	S	2,44 m	899393	40





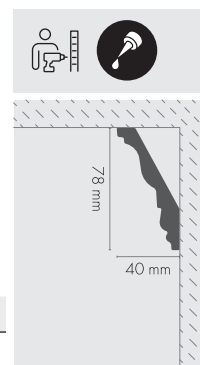
## LGZ-13 PU



LGZ-13	101	S	2,40 m	899409	7



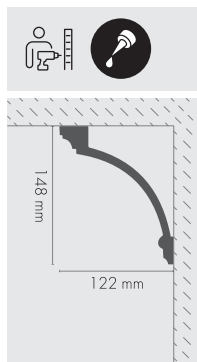
## LGZ-14 PU LGZ-14F



LGZ-14	101	S	2,40 m	899416	60
LGZ-14F	101	S	2,40 m	899423***	32



## LGZ-15 PU



LGZ-15	101	S	2,40 m	899430	15

[S] Wykończenie surowe/ Raw finish/ Rohe Oberfläche

**LGG-35**

178 x 171 x 2400 mm



1255 mm

**LGZ-16**










178 x 171 x 2400 mm

**LGZ-17**

178 x 171 x 2400 mm

Z jednej listwy LGZ-17 można wykonać 2 narożniki!  
You can make 2 corners from one LGZ-17 moulding!  
Aus einer Gesimsleiste LGZ-17 lassen sich 2 Ecken herstellen!

**LGZ-17****LGG-35****LGZ-17**

						
LGG-35		101	S	2,40 m	861031	6
LGZ-16		101	S	2,44 m	860966	10
LGZ-17		101	S	2,44 m	861000	5



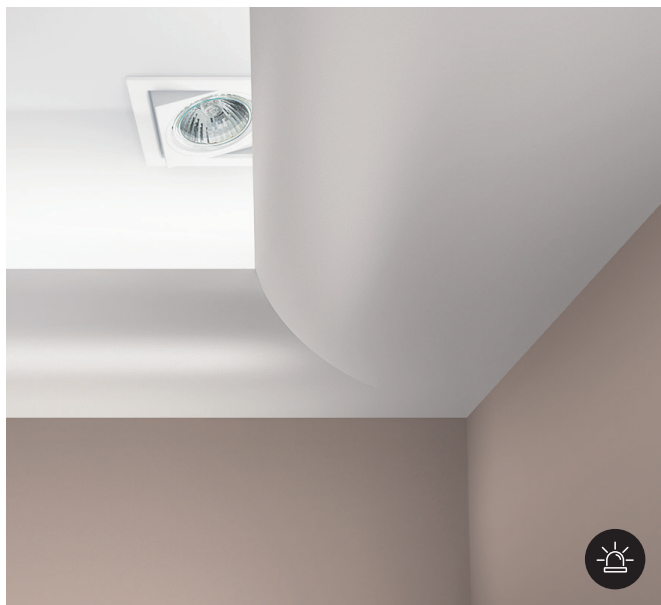


LOC-02/ 101

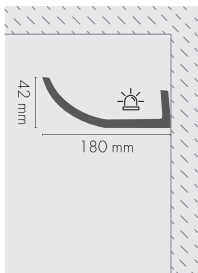


**LISTWY OŚWIETLENIOWE  
LIGHTING MOULDINGS  
LICHTLEISTEN**

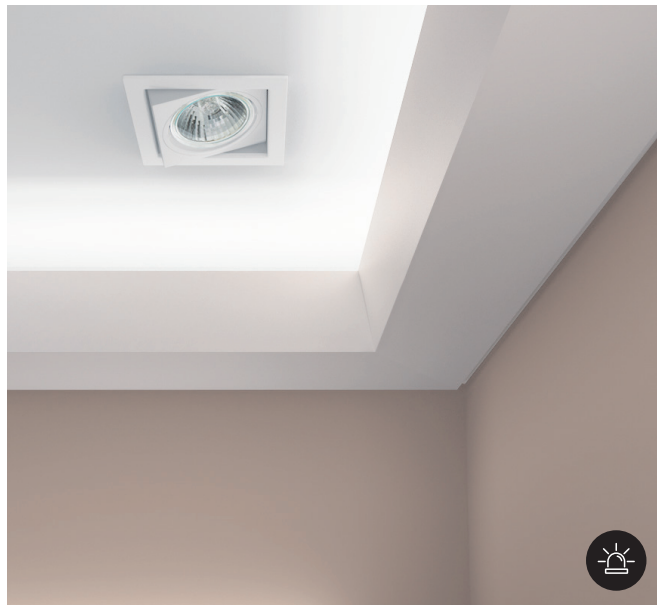
LPC-06/ 101



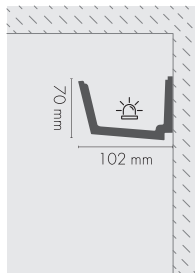
**LOC-01** XPS



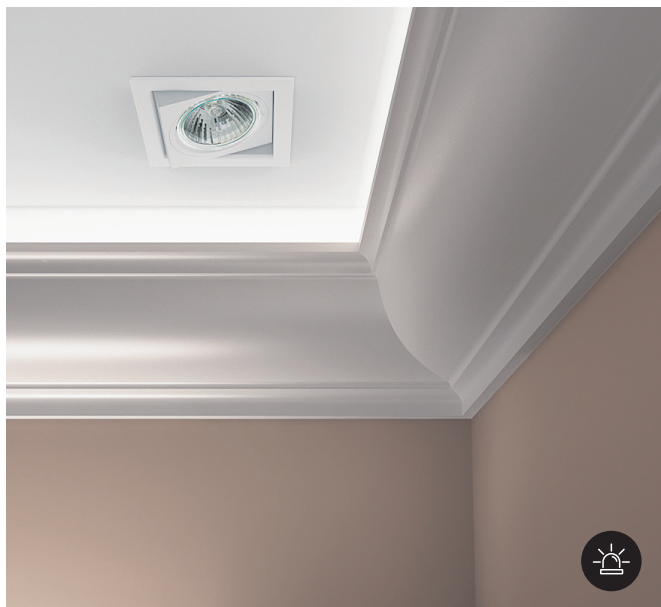
LOC-01						
LOC-01	101	LM	2,44 m	898846***	5	



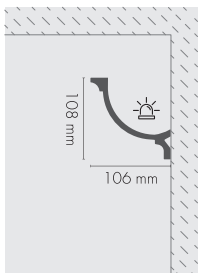
**LOC-02** XPS



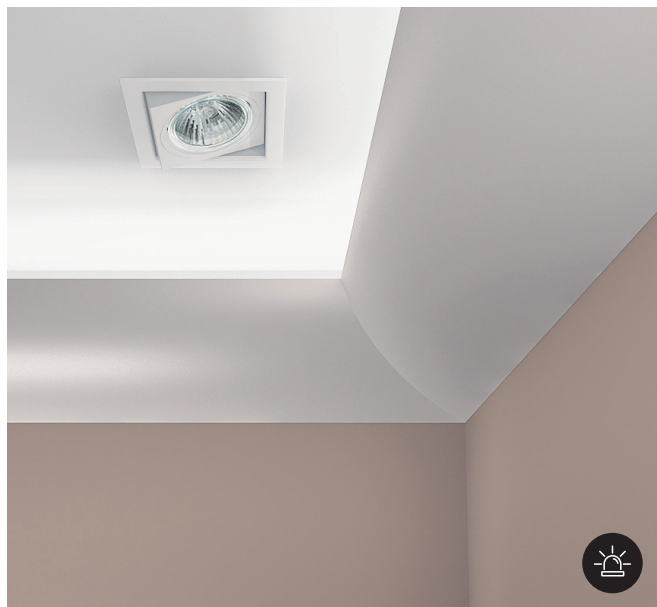
LOC-02						
LOC-02	101	LM	2,44 m	898853	4	



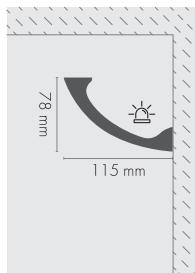
**LOC-04** XPS



LOC-04						
LOC-04	101	LM	2,44 m	898877	8	



**LOC-07** XPS

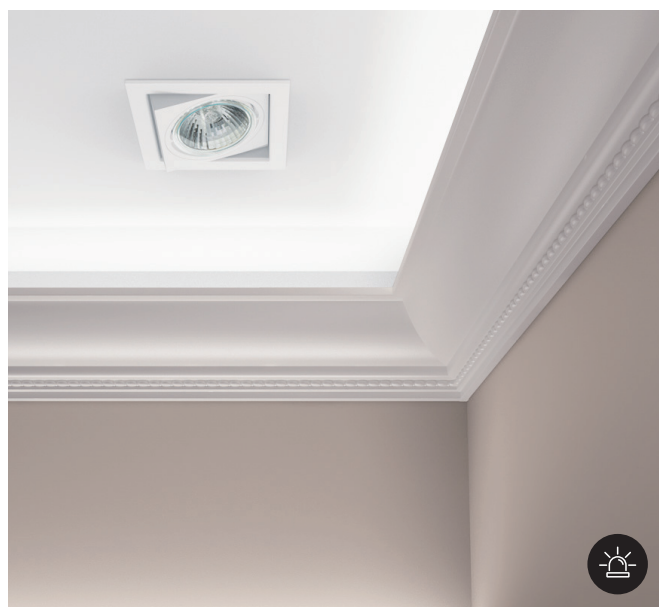


LOC-07						
LOC-07	101	LM	2,44 m	898907	7	

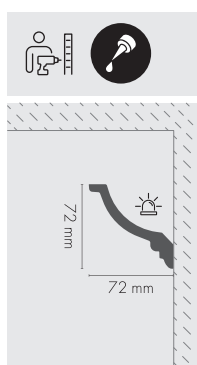
(LM) Lakier matowy podklad/ Matt lacquer primer/ Matte Lackgrundierung

Cezar





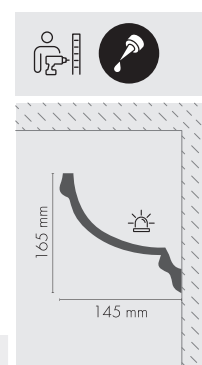
**LGZ-12** PU



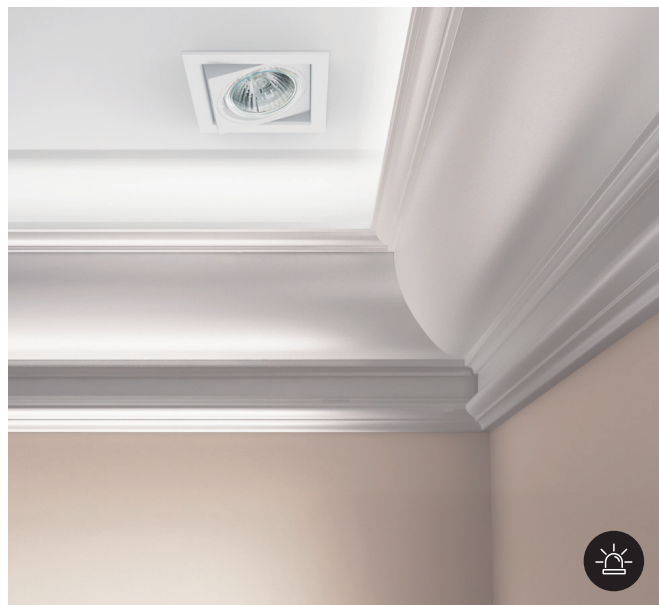
LGZ-12	101	S	2,44 m	899393	40



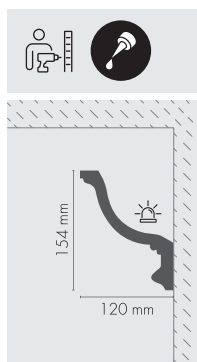
**LGG-14** PU



LGG-14	101	S	2,40 m	899638	10



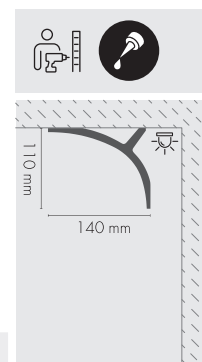
**LGG-18** PU



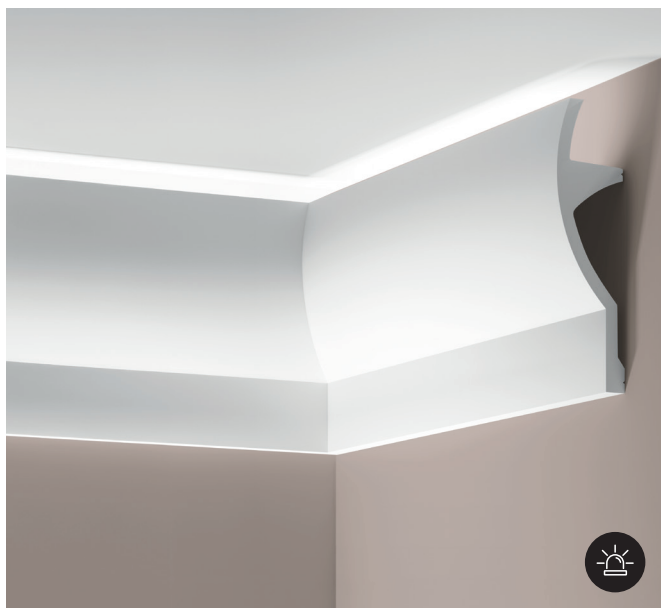
LGG-18	101	S	2,40 m	899706	5



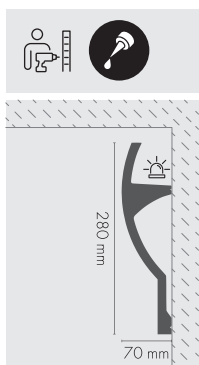
**LGG-40K** PU



LGG-40K	101	BM	2,44 m	839573	10



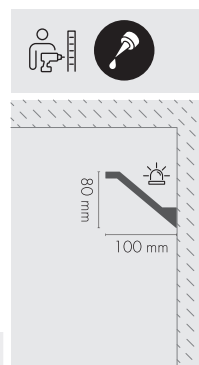
**LGG-41K** **PU**



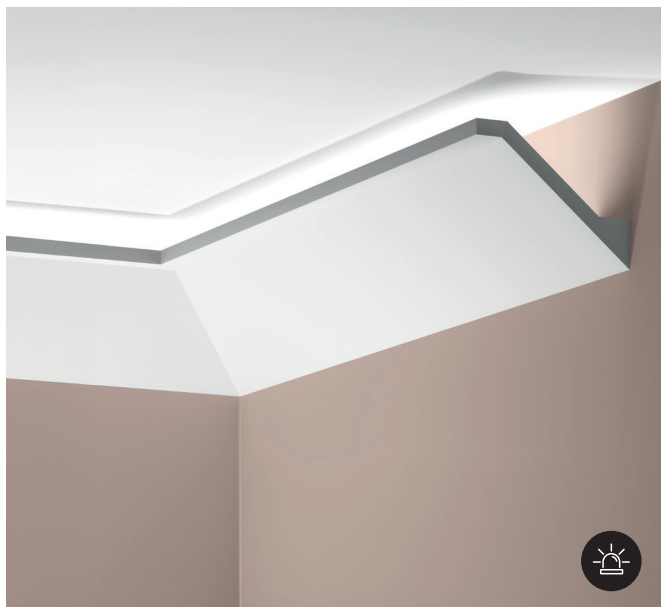
LGG-41K										
LGG-41K	101	BM	2,44 m	840159	5					



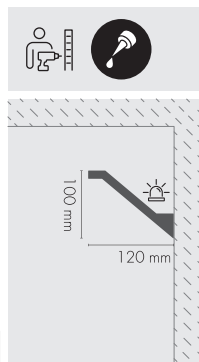
**LGG-50K** **PU**



LGG-50K										
LGG-50K	101	BM	2,40 m	839504	10					



**LGG-51K** **PU**



LGG-51K										
LGG-51K	101	BM	2,40 m	839580	10					







LK-01/ 101

**LISTWY KARNISZOWE  
CURTAIN MOULDINGS  
GARDINENLEISTE**



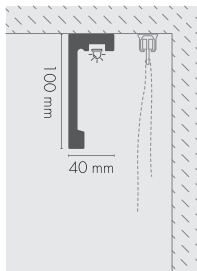


**LK-01** XPS



LK-01		101	LM	2,44 m	664687	10
		101	LM	3,00 m	845840**	10
		9003	LS	2,44 m	664694	10

\*\* Na zamówienie/ On request/ Auf Anfrage

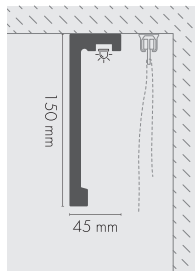


**LK-02** XPS



LK-02		101	LM	2,44 m	664700	6
		101	LM	3,00 m	845857**	6
		9003	LS	2,44 m	664731	6

\*\* Na zamówienie/ On request/ Auf Anfrage

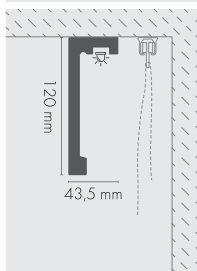


**LK-03** XPS



LK-03		101	LM	2,44 m	664755	7
		101	LM	3,00 m	845864**	7
		9003	LS	2,44 m	664793	7

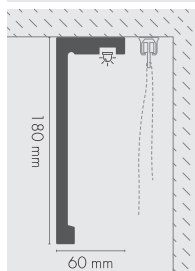
\*\* Na zamówienie/ On request/ Auf Anfrage



**LK-04** XPS



LK-04		101	LM	2,44 m	601880	4

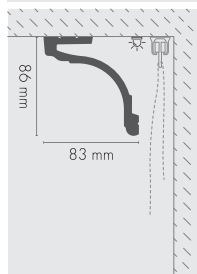


(LM) Lakier matowy podkład/ Matt lacquer primer/ Matte Lackgrundierung, (LS) Lakier satynowy/ Satin lacquer/ Lack satiniert





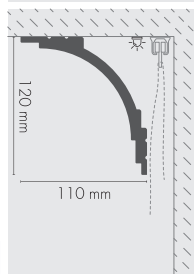
**LK-05** XPS



LK-05	101	LM	2,44 m	830488	10



**LK-06** XPS



LK-06	101	LM	2,44 m	848698	6





LGG-40/ 101

LNG-09/ 101

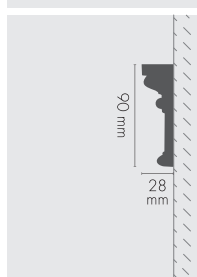
LNG-03/ 101

**LISTWY NAŚCIENNE  
WALL MOULDINGS  
WANDLEISTEN**





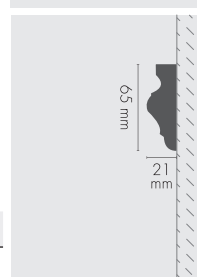
**LNG-01** **PU**



LNG-01	101	S	2,40 m	899997	35



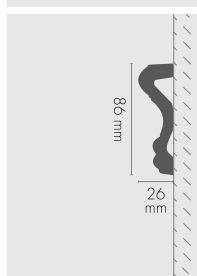
**LNG-02** **PU**  
**LNG-02F**



LNG-02	101	S	2,40 m	880001	40
LNG-02F	101	S	2,40 m	880018***	30



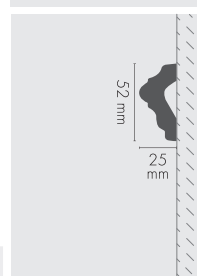
**LNG-03** **PU**  
**LNG-03F**



LNG-03	101	S	2,40 m	880025	50
LNG-03F	101	S	2,40 m	880032***	30



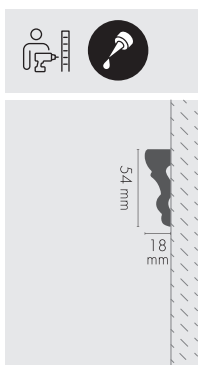
**LNG-04** **PU**



LNG-04	101	S	2,40 m	880049	45



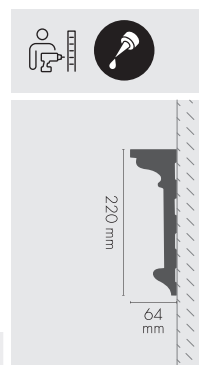
## LNG-05 PU LNG-05F



LNG-05		101	S	2,40 m	880063	60
LNG-05F		101	S	2,40 m	880087	10



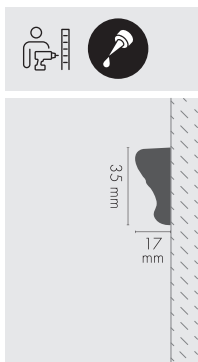
## LNG-06 PU



LNG-06		101	S	2,40 m	880094	10



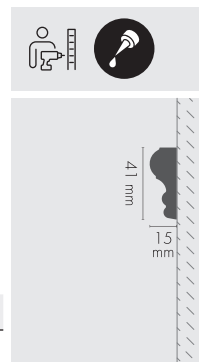
## LNG-07 PU



LNG-07		101	S	2,40 m	880100	90



## LNG-08 XPS LNG-08F PU



LNG-08		101	LM	2,40 m	880117	48
LNG-08F		101	S	2,40 m	880148	30





## LNG-09 XPS LNG-09F PU



40 mm  
20 mm

LNG-09	101	LM	2,40 m	880155	50
LNG-09F	101	S	2,40 m	880186	60



## LNG-10 PU



101 mm  
33 mm

LNG-10	101	S	2,40 m	880193	36



## LNG-11 PU



155 mm  
53 mm

LNG-11	101	S	2,40 m	880209	20



## LNG-12 PU LNG-12F

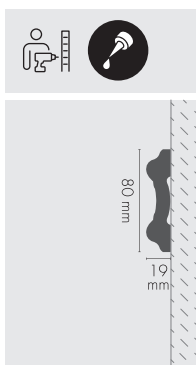


80 mm  
21 mm

LNG-12	101	S	2,40 m	880216	50
LNG-12F	101	S	2,40 m	880223	5



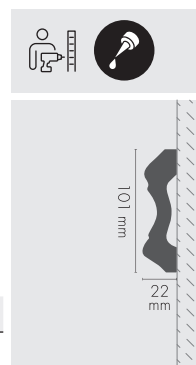
## LNG-13 <sup>PU</sup> LNG-13F



LNG-13						
LNG-13	101	S	2,40 m	880247	50	
LNG-13F	101	S	2,40 m	880254***	40	



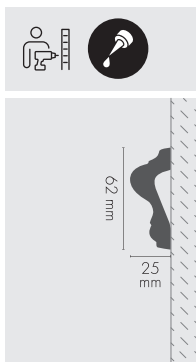
## LNG-14 <sup>PU</sup> LNG-14F



LNG-14						
LNG-14	101	S	2,40 m	880261	25	
LNG-14F	101	S	2,40 m	880285***	34	



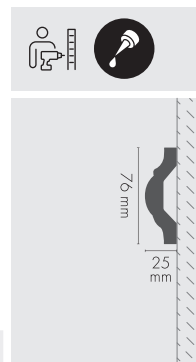
## LNG-15 <sup>PU</sup> LNG-15F



LNG-15						
LNG-15	101	S	2,40 m	880292	65	
LNG-15F	101	S	2,40 m	880308***	55	



## LNG-16 <sup>PU</sup>

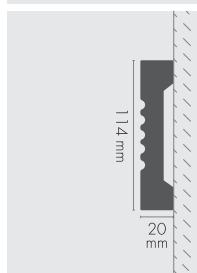


LNG-16						
LNG-16	101	S	2,40 m	880315	60	





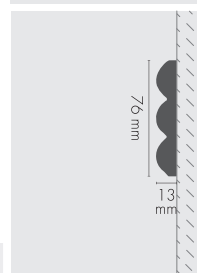
## LNG-17 PU



LNG-17	101	S	2,44 m	880346	25



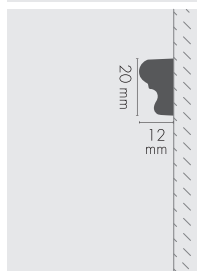
## LNG-18 PU



LNG-18	101	S	2,44 m	880353	5



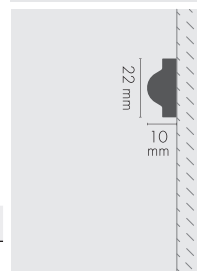
## LNG-19K PU LNG-19KX



LNG-19K	101	BM	2,44 m	840258	100
LNG-19KX	101	BM	2,44 m	840265	50



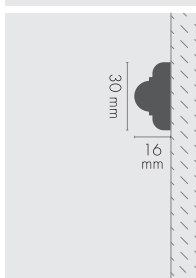
## LNG-20K PU LNG-20KX



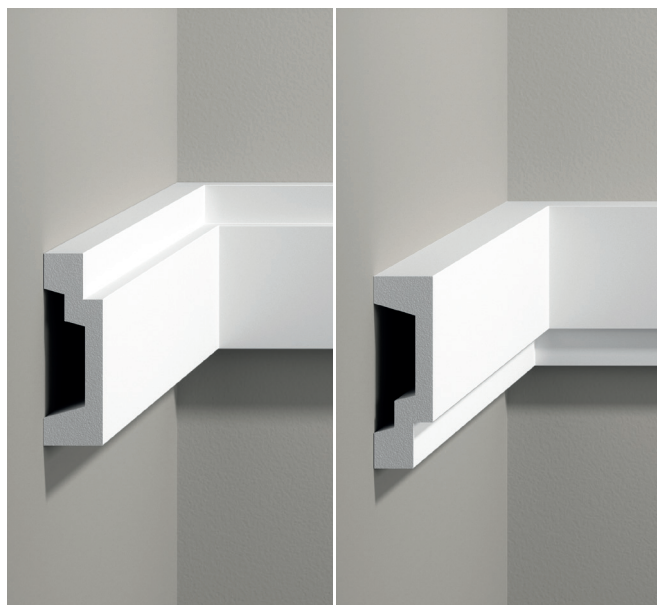
LNG-20K	101	BM	2,40 m	840272	80
LNG-20KX	101	BM	2,40 m	840289	25



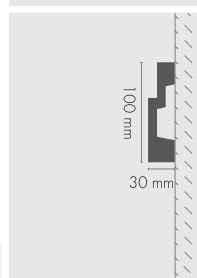
## LNG-21K <sup>PU</sup> LNG-21KX



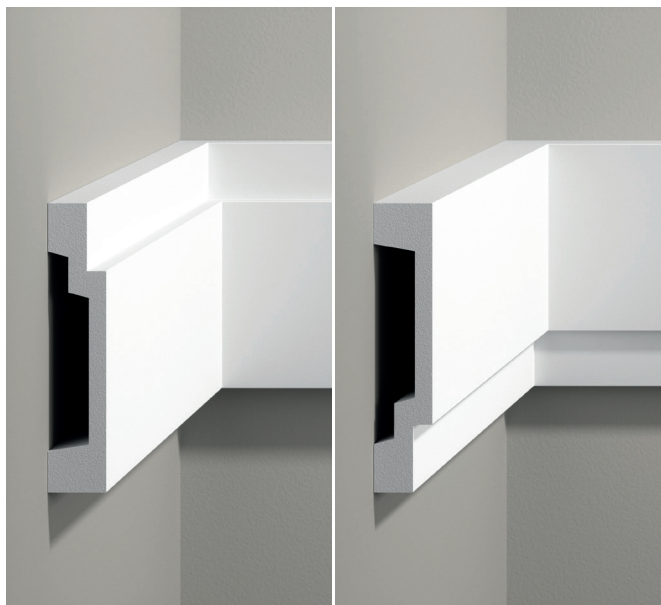
LNG-21K		101	BM	2,40 m	840326	5
LNG-21KX		101	BM	2,40 m	840333	5



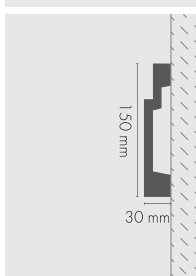
## LNG-22K <sup>PU</sup>



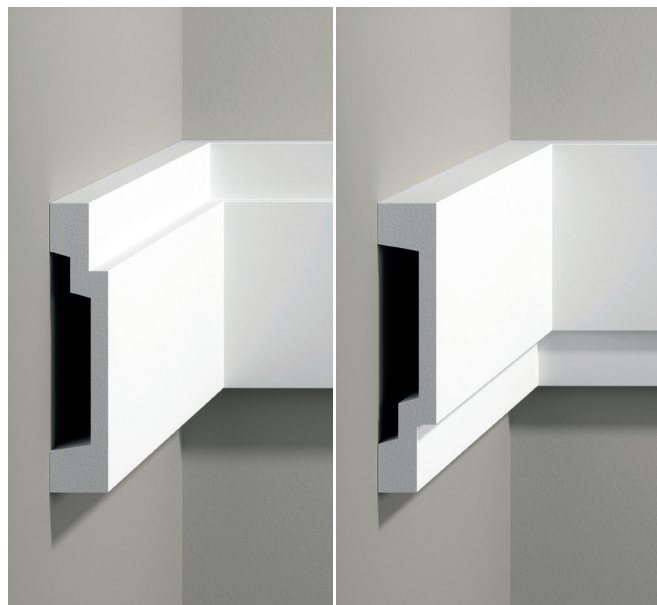
LNG-22K		101	BM	2,40 m	840227	10



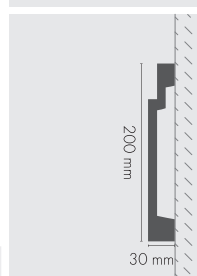
## LNG-23K <sup>PU</sup>



LNG-23K		101	BM	2,40 m	840234	15

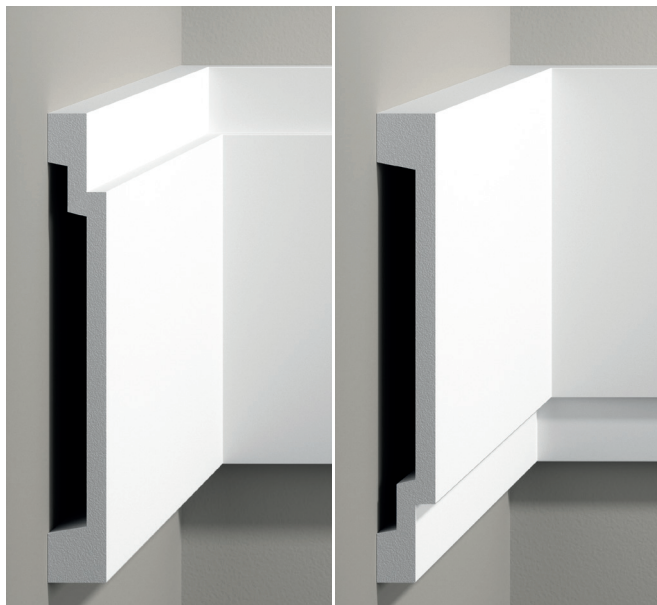


## LNG-24K <sup>PU</sup>



LNG-24K		101	BM	2,40 m	840241	15





## LNG-25K PU



240 mm

30 mm



LNG-25K 101 BM 2,40 m 840296 5



## LNG-26 XPS



40 mm

18 mm



LNG-26 101 LM 2,44 m 898921 50



## LNG-27 XPS



22 mm

10 mm



LNG-27 101 LM 2,44 m 898938 170



## LNG-28 XPS



74 mm

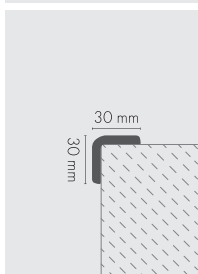
23 mm



LNG-28 101 LM 2,44 m 898952 23



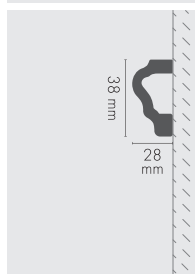
**LNG-29** XPS



LNG-29			101	LM	2,44 m	899065	56
--------	--	--	-----	----	--------	--------	----



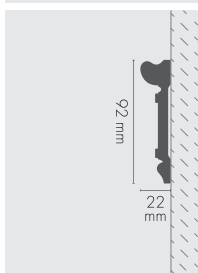
**LNG-30** XPS



LNG-30			101	LM	2,44 m	899072	45
--------	--	--	-----	----	--------	--------	----



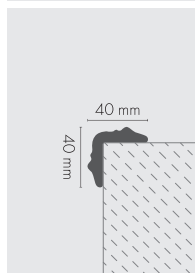
**LNG-31** XPS



LNG-31			101	LM	2,44 m	899164	24
--------	--	--	-----	----	--------	--------	----



**LGG-37** PU

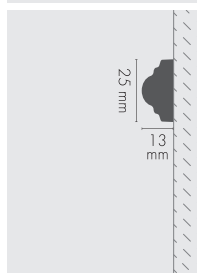


LGG-37			101	S	2,40 m	861055	60
--------	--	--	-----	---	--------	--------	----





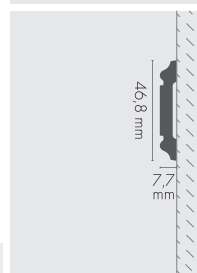
## LNG-42 XPS



LNG-42	101	LM	2,44 m	654022	100



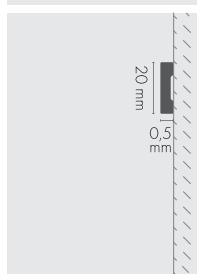
## LPC-53 XPS



LPC-53	BI	BM	2,44 m	826054**	80



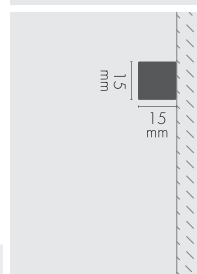
## LPC-54 XPS



LPC-54	BI	BM	2,44 m	826061**	300



## LPC-55 XPS



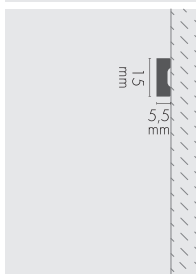
LPC-55	BI	BM	2,44 m	826078**	100

(LM) Lakier matowy podkład / Matt lacquer primer / Matte Lackgrundierung, (BM) Produkt barwiony w masie - matowy / Full body coloured product - matt / Einfarbiges Produkt - matt





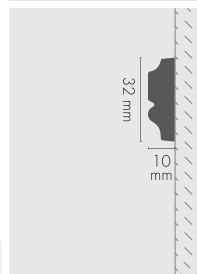
**LPC-56** XPS



LPC-56	BI	BM	2,44 m	826085**	330



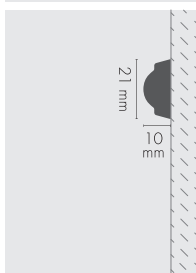
**LNG-57** XPS



LNG-57	BI	BM	2,44 m	826092**	100



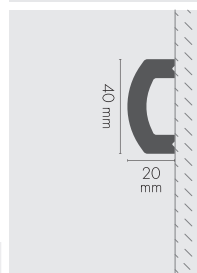
**LNG-58** XPS



LNG-58	BI	BM	2,44 m	826108**	160



**LNG-59** XPS

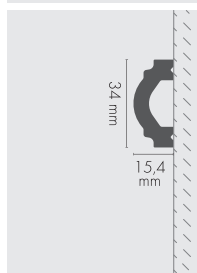


LNG-59	101	LM	2,44 m	853760	40





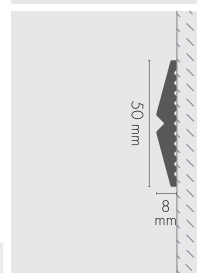
## LNG-60 XPS



LNG-60	101	LM	2,44 m	853777	60



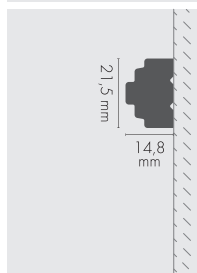
## LNG-61 XPS



LNG-61	101	LM	2,44 m	853784	80



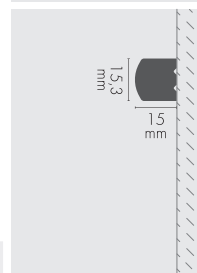
## LNG-62 XPS



LNG-62	101	LM	2,44 m	853791	95



## LNG-63 XPS

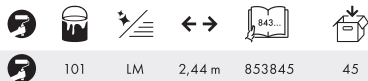
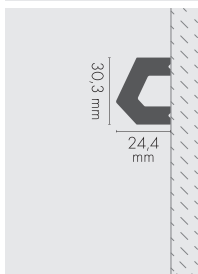


LNG-63	101	LM	2,44 m	853807	108

(LM) Lakier matowy podkład/ Matt lacquer primer/ Matte Lackgrundierung



## LNG-64 XPS



LNG-64 101 LM 2,44 m 853845 45







**LNZ-01** **PU**  
**LNZ-01F**



78 mm  
13 mm



LNZ-01	101	S	2,40 m	899898	35
LNZ-01F	101	S	2,40 m	899904***	36



**LNZ-02** **PU**  
**LNZ-02F**



127 mm  
16 mm



LNZ-02	101	S	2,44 m	899911	20
LNZ-02F	101	S	2,44 m	899928***	36



**LNZ-03** **PU**  
**LNZ-03F**



81 mm  
20 mm



LNZ-03	101	S	2,40 m	899935	20
LNZ-03F	101	S	2,40 m	899942***	30



**LNZ-04** **PU**  
**LNZ-04F**



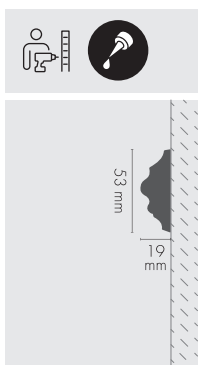
51 mm  
19 mm



LNZ-04	101	S	2,40 m	899959	35
LNZ-04F	101	S	2,40 m	899966***	40



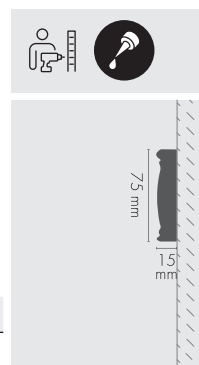
**LNZ-05** **PU**  
**LNZ-05F**



LNZ-05		101	S	2,40 m	899973	45
LNZ-05F		101	S	2,40 m	899980***	38



**LNZ-06** **PU**  
**LNZ-06F**



LNZ-06		101	S	2,40 m	861079	55
LNZ-06F		101	S	2,40 m	861086***	42





# NAROŻNIKI DO LISTEW NAŚCIENNYCH WALL CORNER MOULDINGS DEKORATIVE ECKSTÜCKE FÜR WANDLEISTEN

PU



LNG-02-1		101	S	270 x 270 x 21 mm	880421	60
LNG-02-2		101	S	240 x 240 x 21 mm	880438	50
LNG-07-1		101	S	170 x 170 x 15 mm	880445	50
LNG-08-1		101	S	230 x 230 x 15 mm	880452	100
LNG-09-1		101	S	210 x 210 x 20 mm	880469	5
LNG-09-2		101	S	235 x 110 x 20 mm	880483	80
LNG-09-3		101	S	155 x 155 x 20 mm	880490	100
LNG-20-1		101	S	130 x 130 x 16 mm	845680	30
LNZ-03-1		101	S	505 x 505 x 27 mm	880360	25
LNZ-03-2		101	S	410 x 410 x 20 mm	880384	5
LNZ-04-1		101	S	240 x 240 x 19 mm	880391	20
LNZ-05-1		101	S	255 x 255 x 19 mm	880407	10
LNZ-05-2		101	S	255 x 255 x 19 mm	880414	80



LNZ-04-1



LNZ-04



LNG-08-1



LNG-08



LNG-07-1



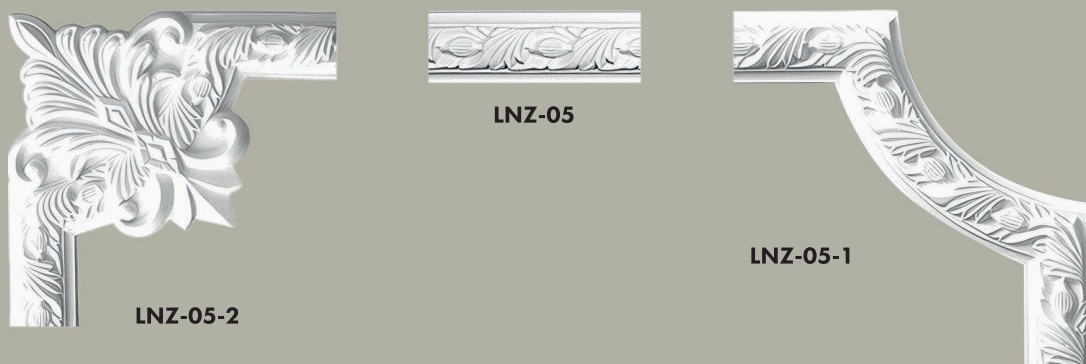
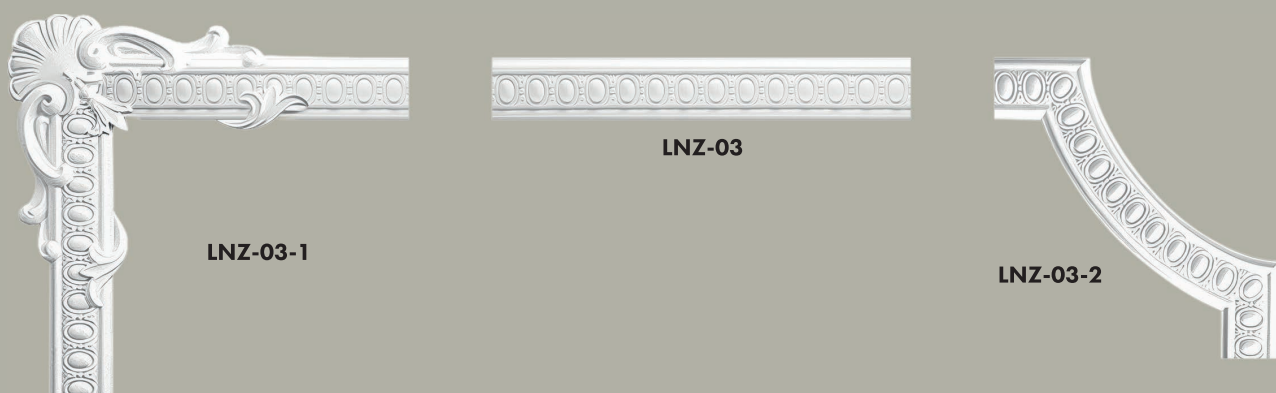
LNG-07



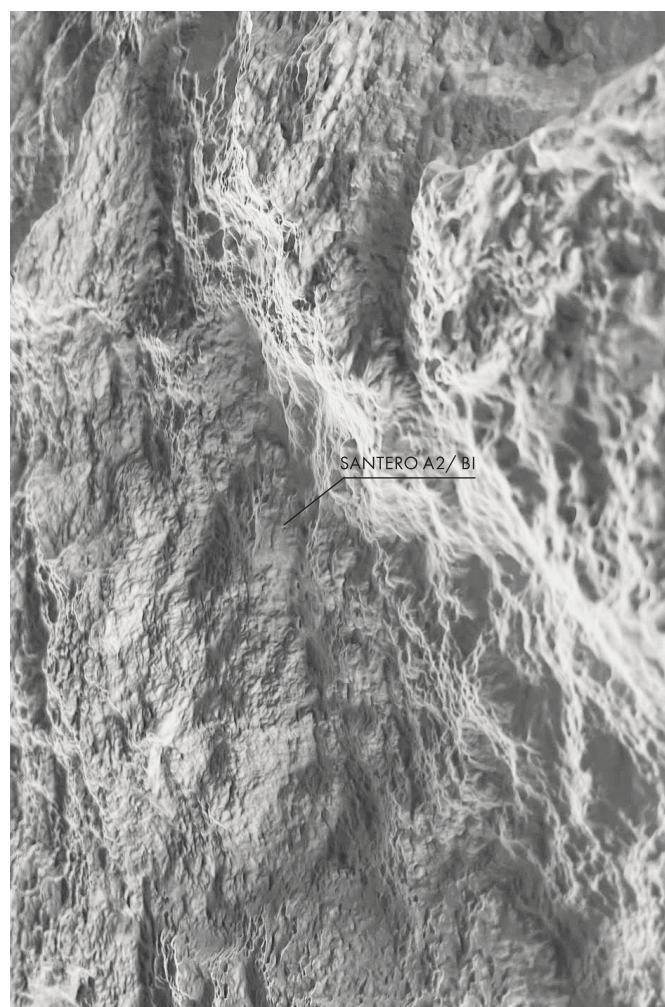
LNG-20-1



LNG-20









THALIA® 3/ 101

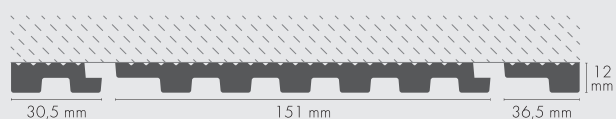
LPC-20/ 101

**PANELE ŚCIENNE  
WALL PANELS  
WANDPANELEE**





# THALIA® 1 XPS



**PT01-62**

Listwa zakończeniowa lewa  
Left finishing trim  
Linke Abschlussleiste

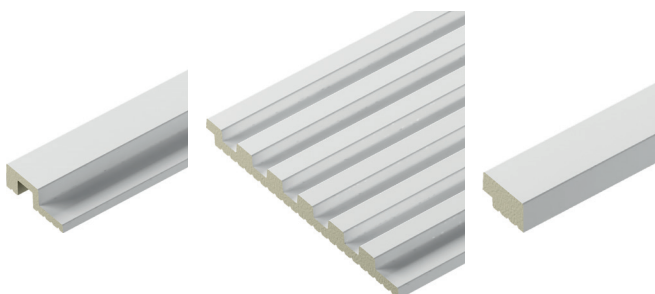
**PT01-61**

**PT01-63**

Listwa zakończeniowa prawa  
Right finishing trim  
Rechte Abschlussleiste



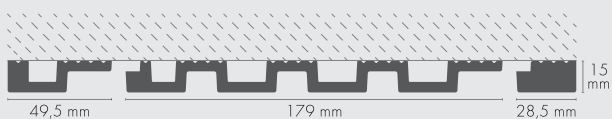
PT01-61	PT01-62	PT01-63
101	101	101
LM	LM	LM
2,8 m	2,8 m	2,8 m
848728	848735	848742
17	46	32



(LM) Lakier matowy podkład/ Matt lacquer primer/ Matte Lackgrundierung



## THALIA® 2 XPS



**PT02-65**

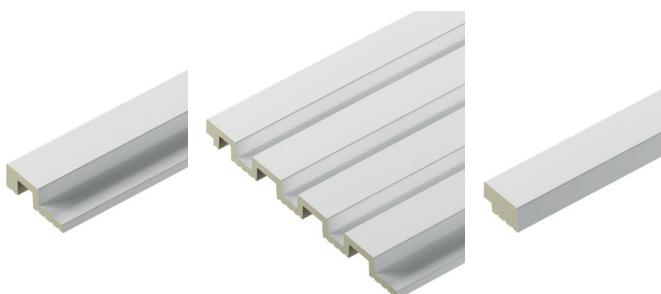
Listwa zakończeniowa lewa  
Left finishing trim  
Linke Abschlussleiste

**PT02-64**

Listwa zakończeniowa prawa  
Right finishing trim  
Rechte Abschlussleiste

**PT02-66**

PT02-64		101	LM	2,8 m	848759	10
PT02-65		101	LM	2,8 m	848773	23
PT02-66		101	LM	2,8 m	848766	20







# **THALIA® 3** **XPS**



**PT03-67**



PT03-67



101

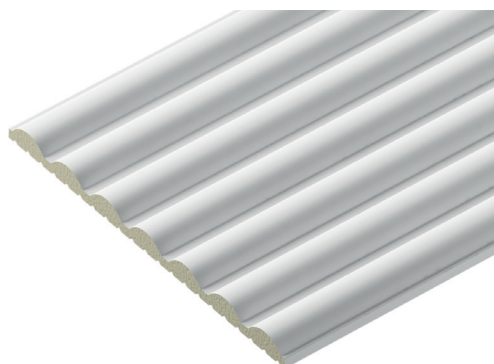
LM

2,8 m

848780

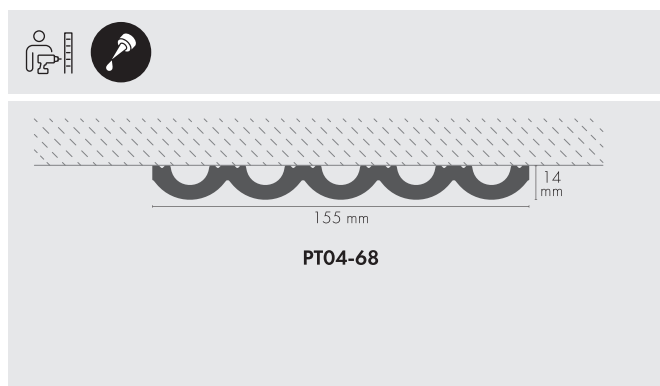
24

Panele ścienne/ Wall panels/ Wandpaneele

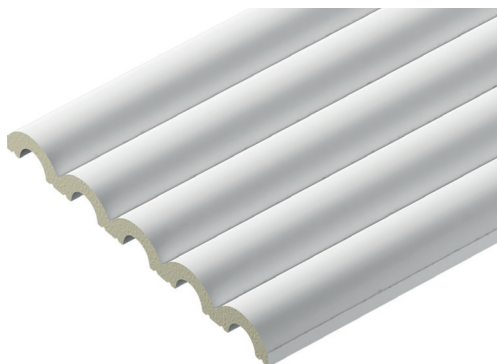




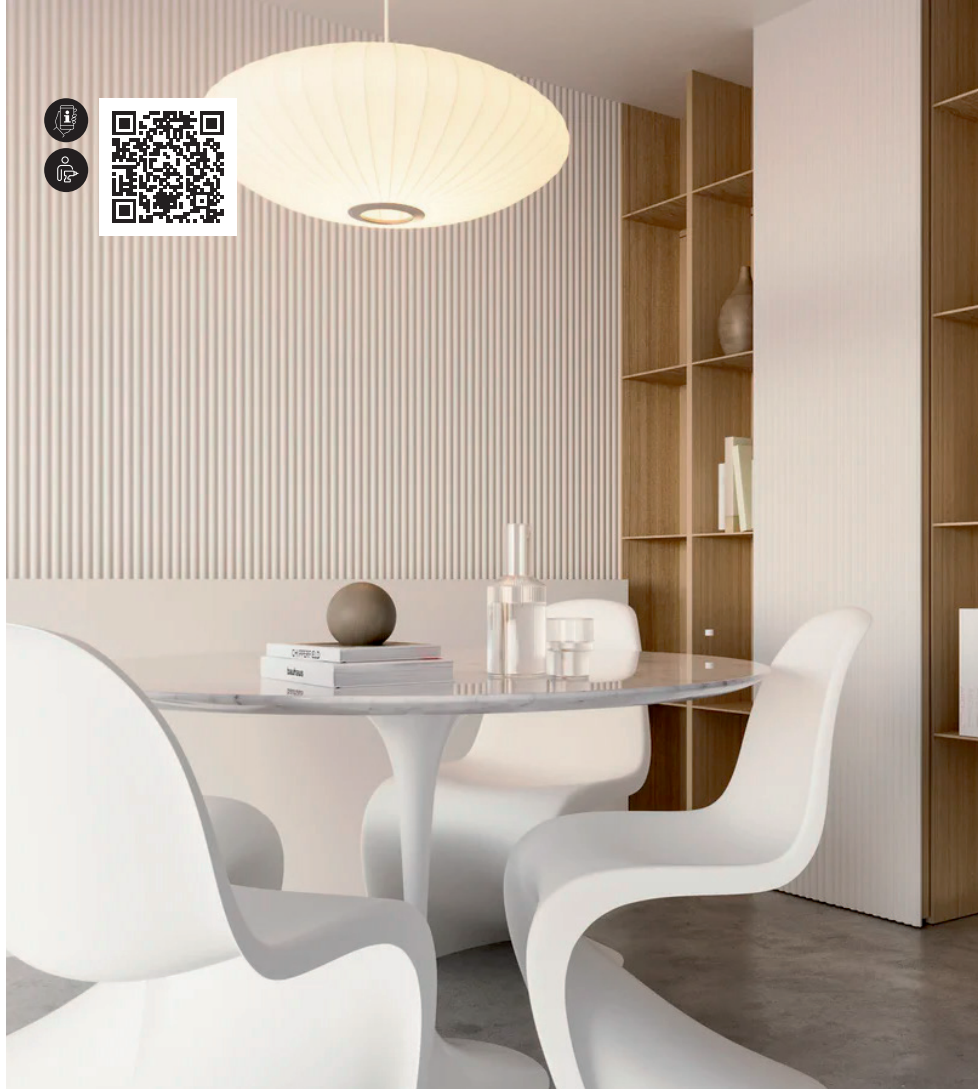
## THALIA® 4 XPS



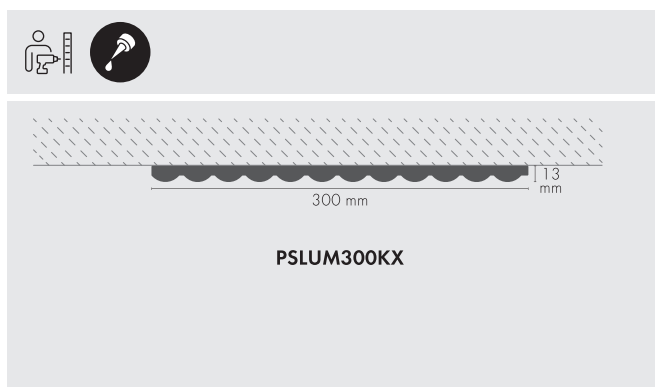
PT04-68	101	LM	2,8 m	853586	16





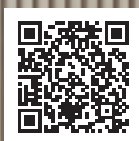


# LUMINO PU



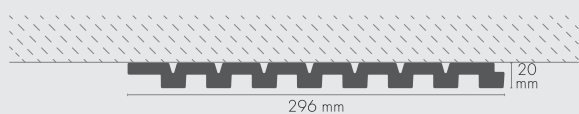
PSLUM300KX	BI	BM	2,7 m	845895	10
------------	----	----	-------	--------	----





# LAVENO

PU



PSLAV300KX



PSLAV300KX



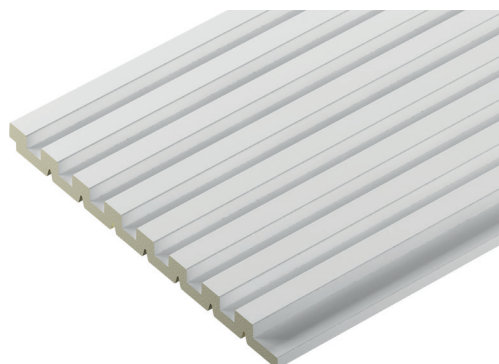
BI

BM

2,7 m

845871

10



Panele ściienne / Wall panels / Wandpaneele

75

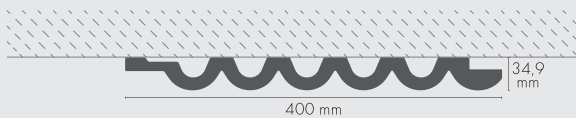
Cezar





# LUGANO

PU



PSLUG400KX



PSLUG400KX

BI

BM

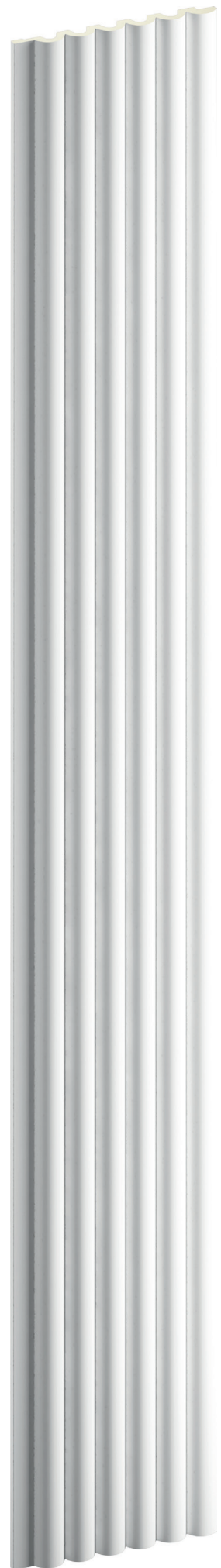
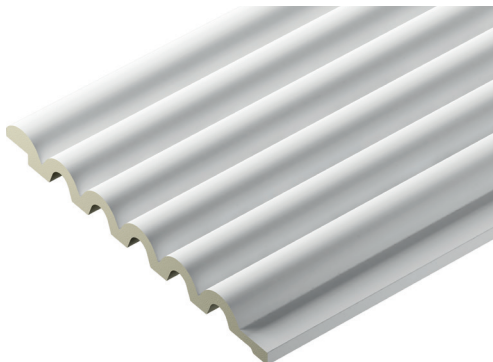
2,6 m

845888

10

Panele ścienne/ Wall panels/ Wandpaneele

76



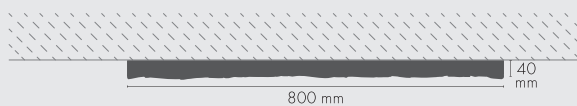
(BM) Produkt barwiony w masie - matowy / Full body coloured product - matt / Einfarbiges Produkt - matt





# SANTERO H1

PU



PSSAH1800KX



PSSAH1800KX



BI

BM

800 x 2600 x 40 mm

845925

4

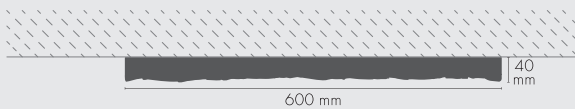


Panele ścienne / Wall panels / Wandpaneele





## SANTERO A1 PU



PSSAA1600K



PSSAA1600K



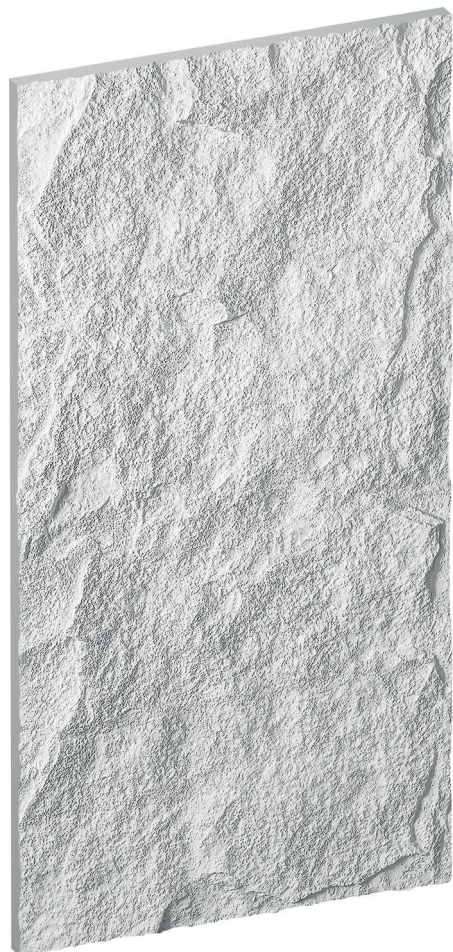
BI

BM

600 x 1200 x 40 mm

845901

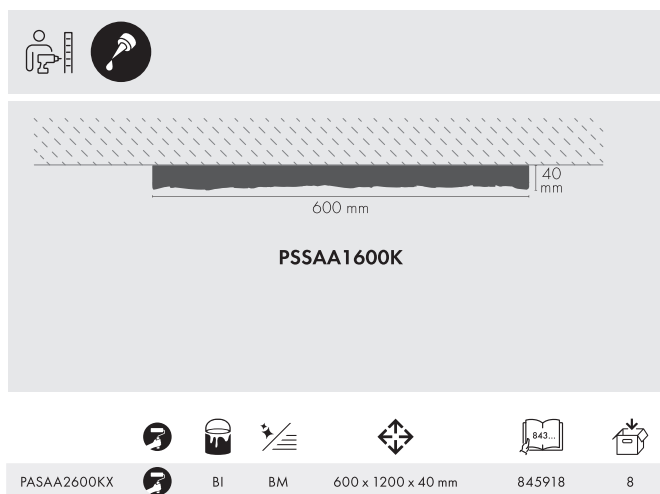
10







## SANTERO A2 PU

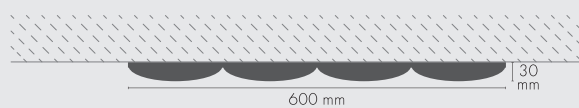






# MODENA

PU



PSMO600MU



PSMO600MU



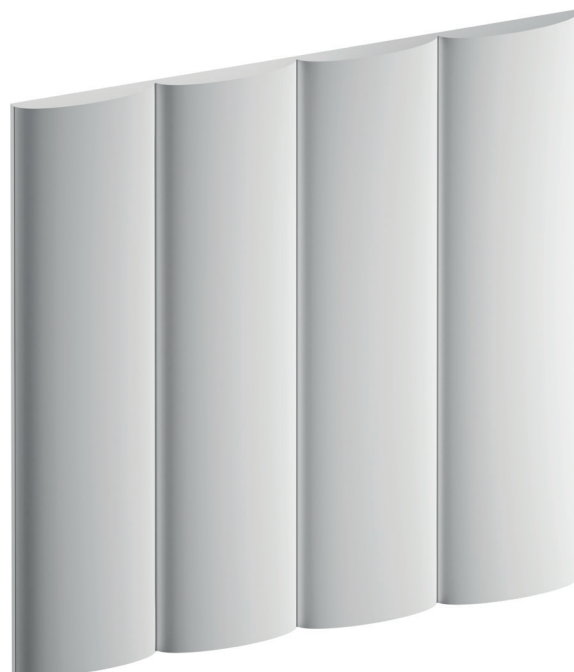
BI

BM

600 x 600 x 30 mm

842771

10



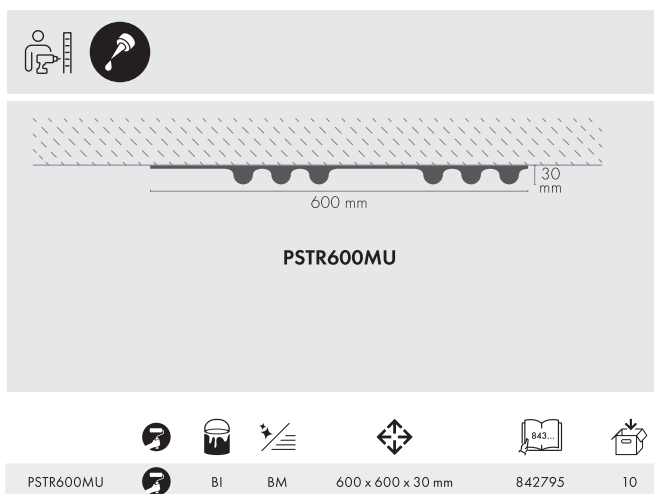
Panele ścienne/ Wall panels/ Wandpaneele

80



# TRENTO

PU



Panele ścienne / Wall panels / Wandpaneele

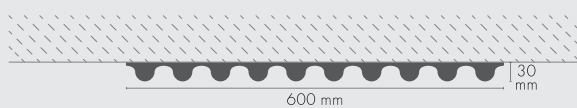
81





# TREVI

PU



PSTV600MU



PSTV600MU



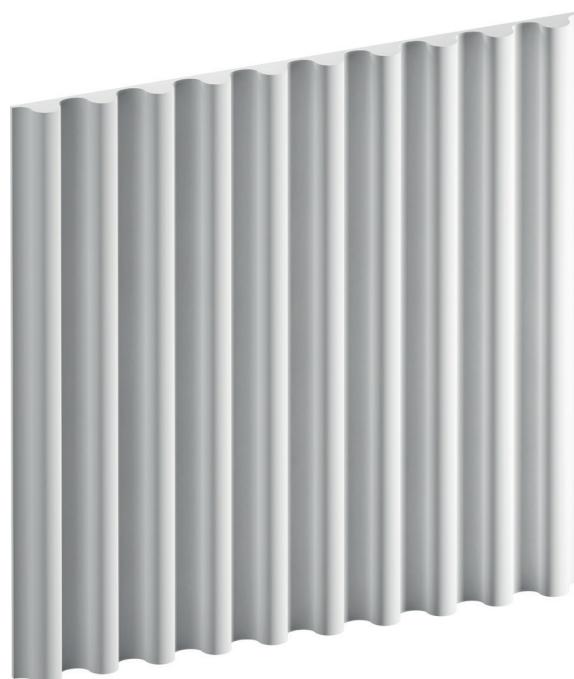
BI

BM

600 x 600 x 30 mm

842801

10

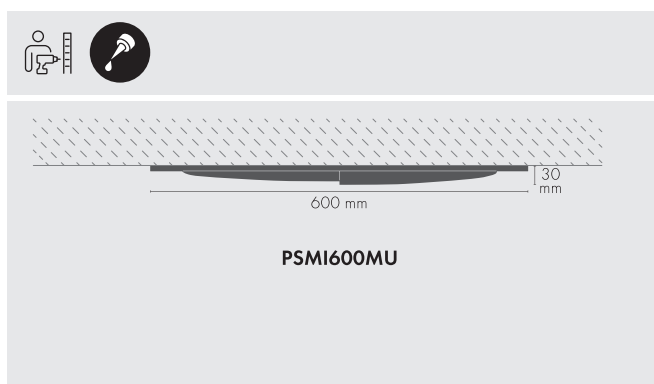






# MILANO

PU



PSMI600MU	BI	BM	600 x 1200 x 40 mm	842764	10
-----------	----	----	--------------------	--------	----



Panele ścienne / Wall panels / Wandpaneele

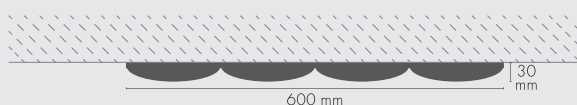
83





# TORINO

PU



PSTO600MU



PSTO600MU



BI

BM

600 x 600 x 30 mm

842788

10





R13/ 101

KDS-13/ 101

KDS-09/ 101

LGG-02/ 101

KDS-09/ 101

LPC-25/ 101

## DEKORACJE DECORATIONS DEKORATIONEN



# OBRAMOWANIA DRZWI I OKIEN

## DOOR AND WINDOW FRAMES

## TÜREN UND FENSTERRAHMEN

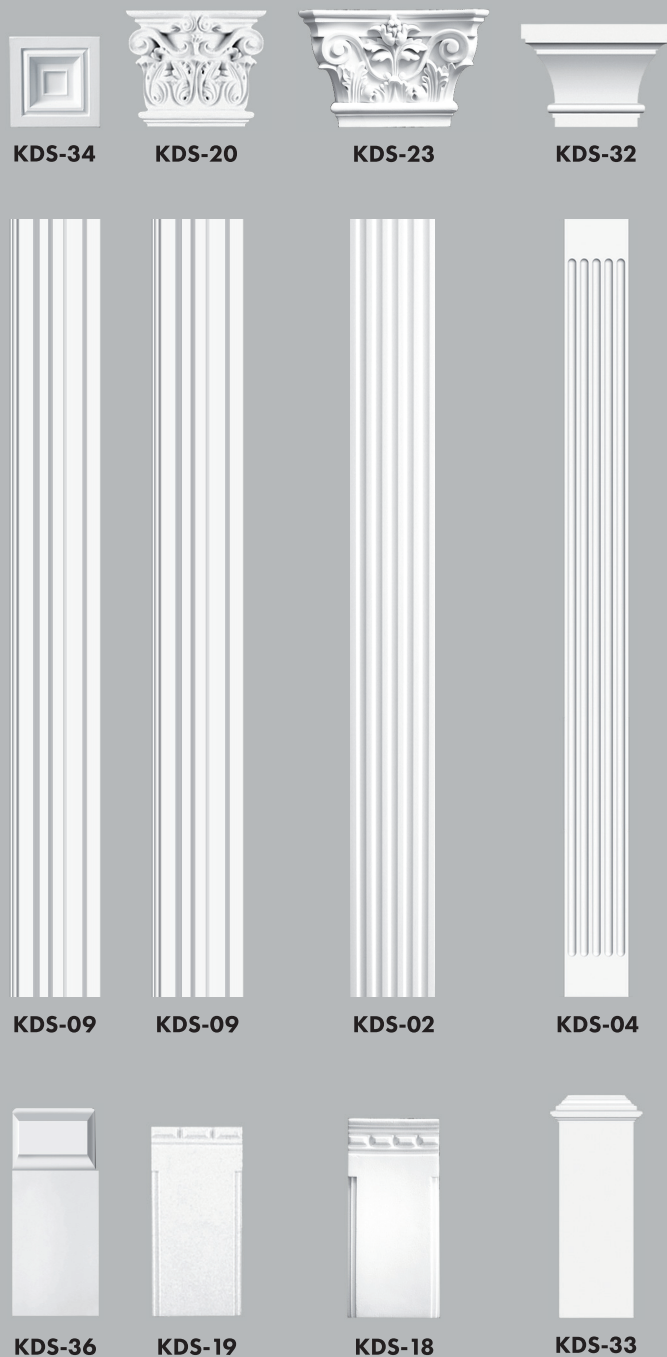
PU



KDS-02		101	S	2000 x 130 x 15 mm	880827	35
KDS-04		101	S	2200 x 170 x 22 mm	880841	5
KDS-05		101	S	2400 x 93 x 32 mm	880858	32
KDS-06		101	S	2000 x 250 x 30 mm	880865	5
KDS-07		101	S	2000 x 180 x 25 mm	880872	10
KDS-08		101	S	2000 x 320 x 30 mm	880889	5
KDS-09		101	S	2400 x 97 x 22 mm	880896	31
KDS-14		101	S	255 x 295 x 88 mm	880964	5
KDS-15		101	S	450 x 200 x 37 mm	880971	5
KDS-16		101	S	425 x 550 x 190 mm	880988	5
KDS-17		101	S	530 x 380 x 55 mm	880995	5
KDS-18		101	S	300 x 140 x 33 mm	881008	5
KDS-19		101	S	300 x 114 x 33 mm	881015	50
KDS-20		101	S	145 x 130 x 45 mm	881022	5
KDS-21		101	S	446 x 182 x 67 mm	881039	5
KDS-22		101	S	335 x 158 x 71 mm	881046	5
KDS-23		101	S	135 x 215 x 55 mm	881053	5
KDS-24		101	S	295 x 165 x 43 mm	881060	5
KDS-30		101	S	250 x 95 x 40 mm	881138	50
KDS-32		101	S	330 x 224 x 102 mm	881152	5
KDS-33		101	S	310 x 74 x 89 mm	881169**	5
KDS-34		101	S	97 x 97 x 30 mm	881176	90
KDS-35		101	S	97 x 97 x 40 mm	881183	70
KDS-36		101	S	233 x 95 x 30 mm	881190	50

Dekoracje/ Decorations/ Dekorationen

86





**KDS-14**



**KDS-16**



**KDS-21**



**KDS-35**



**KDS-05**



**KDS-34**



**KDS-07**



**KDS-08**



**KDS-06**



**KDS-05**



**KDS-05**



**KDS-15**



**KDS-17**



**KDS-22**



**KDS-30**



**KDS-24**



**KDS-30**



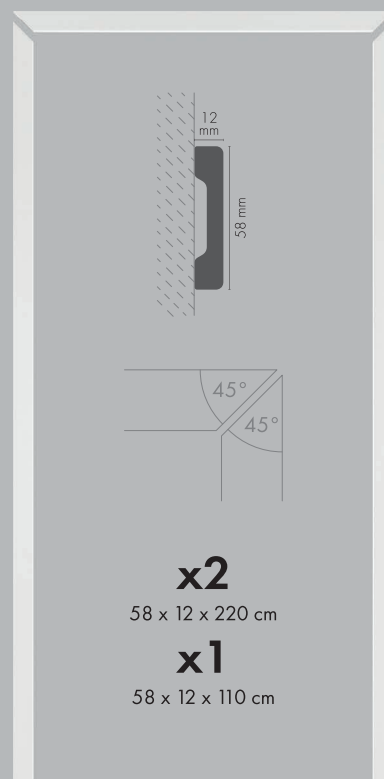
# OBRAMOWANIA DRZWI I OKIEN DOOR AND WINDOW FRAMES TÜREN UND FENSTERRAHMEN

## XPS

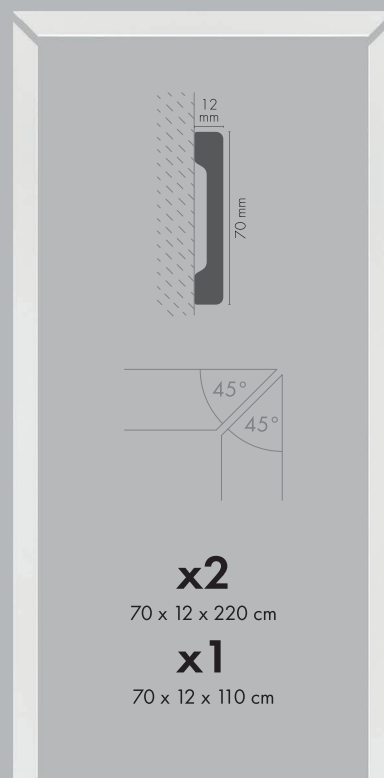
LPC-32		101	LM	2,2 m	621338**	12
LPC-37		101	LM	2,2 m	621345**	12

## PU

KDS-01		101	S	2400 x 130 x 21 mm	880810	10
KDS-03		101	S	2160 x 165 x 70 mm	880834	10
KDS-05		101	S	2400 x 93 x 32 mm	880858	32
KDS-10		101	S	1265 x 195 x 30 mm	880902	10
KDS-13		101	S	1175 x 360 x 60 mm	880957***	5
KDS-25		101	S	155 x 115 x 20 mm	881077	5
KDS-28		101	S	320 x 130 x 15 mm	881107	100
KDS-29		101	S	230 x 135 x 30 mm	881114	5
KDS-30		101	S	250 x 95 x 40 mm	881138	50
KDS-31		101	S	110 x 83 x 50 mm	881145	50
KDS-36		101	S	233 x 95 x 30 mm	881190	50
LNG-31		101	LM	2440 x 92 x 22 mm	899164	24



LPC-32



LPC-37



KDS-10



KDS-28



KDS-29



KDS-25

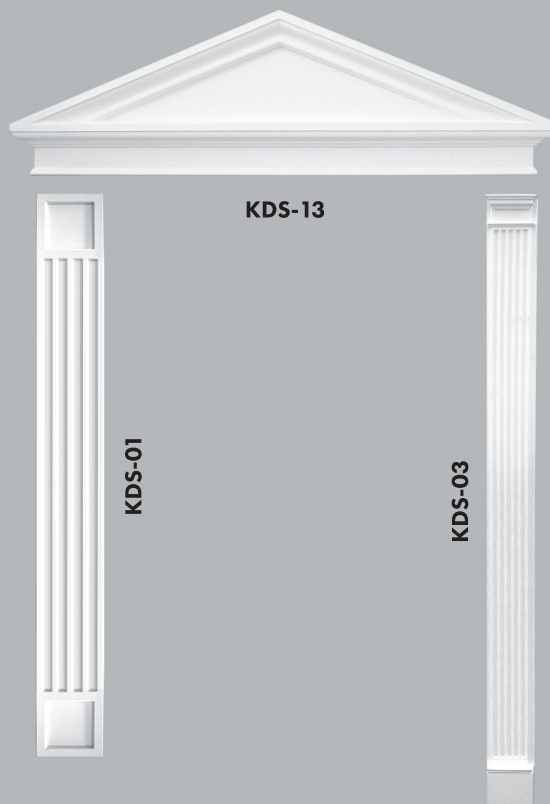


KDS-10 + KDS-26

KDS-10 + KDS-28

KDS-10 + KDS-29

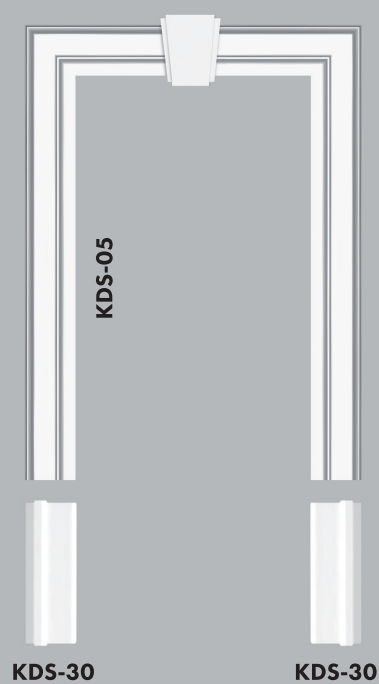
KDS-10 + KDS-25



KDS-13

KDS-01

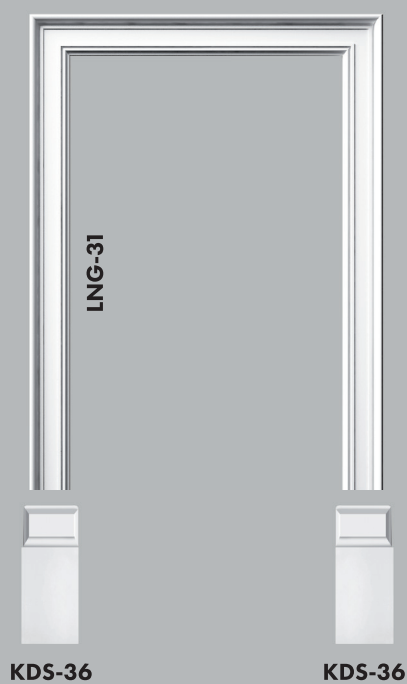
KDS-03



KDS-05

KDS-30

KDS-30



LNG-31

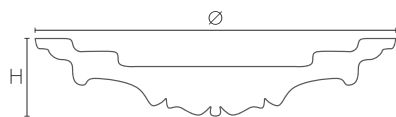
KDS-36

KDS-36



# DEKORACJE SUFITOWE CEILING ORNAMENTS DECKENDEKORATIONEN

PU



R-03		101	S	77,5 x 510 mm/ H 40 mm	880520	10
R-04		101	S	ø 648 mm/ H 100 mm	880537	1
R-08		101	S	ø 380 mm/ H 45 mm	880612	10
R-09		101	S	ø 375 mm/ H 44 mm	880636	15
R-10		101	S	ø 460 mm/ H 38 mm	880643**	20
R-11		101	S	ø 485 mm/ H 41 mm	880650	10
R-12		101	S	ø 620 mm/ H 41 mm	880667	10
R-13		101	S	ø 740 mm/ H 38 mm	880674	12
R-14		101	S	ø 600 mm/ H 70 mm	880681	10
R-15		101	S	ø 690 mm/ H 65 mm	880698	5
R-16		101	S	ø 775 mm/ H 40 mm	880704	15
R-18		101	S	ø 610 mm/ H 75 mm	880773	5
R-19		101	S	ø 830 mm/ H 50 mm	880551	5
R-20		101	S	ø 460 mm/ H 45 mm	880599	10
R-21		101	S	ø 600 mm/ H 82 mm	880605	10
R-22		101	S	ø 950 mm/ H 113 mm	861093	5
R-23		101	S	ø 510 mm/ H 30 mm	861109	5
R-24		101	S	ø 535 mm/ H 34 mm	861130	15
R-25K		101	BM	ø 246 mm/ H 30 mm	839856	20
R-26K		101	BM	ø 305 mm/ H 30 mm	839863	15
R-27K		101	BM	470 x 345 mm/ H 80 mm	840340	5
R-28K		101	BM	ø 475 mm/ H 35 mm	840357	5
R-29K		101	BM	ø 495 mm/ H 45 mm	840364	10
R-30K		101	BM	ø 559 mm/ H 45 mm	840371	5
R-31K		101	BM	ø 762 mm/ H 60 mm	839870	5
R-32K		101	BM	940 x 660 mm/ H 35 mm	839887	5

Dekoracje/ Decorations/ Dekorationen

90



R-25K



R-26K



R-20



R-28K



R-24



R-30K



R-12



R-15



R-19



R-22



**R-09**



**R-08**



**R-10**



**R-11**



**R-29K**



**R-23**



**R-14**



**R-21**



**R-18**



**R-13**



**R-31K**



**R-16**



**R-27K**



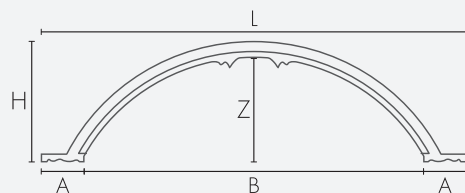
**R-03**



**R-32K**



**R-04**



L	H	Z	A	B
ø 684 mm	100 mm	80 mm	57 mm	ø 570 mm



## NISZE NICHES NISCHEN

PU

N-01		101	S	600 x 1105 x 190 mm	881299	1

## WSPORNIKI BRACKETS STUCKKONSOLEN

PU

WG-01		101	S	165 x 95 x 255 mm	880780	5
WG-02		101	S	180 x 90 x 230 mm	880797	5
WG-03		101	S	156 x 120 x 245 mm	880803	10

## DEKORACJE DECORATIONS DEKORATIONEN

PU

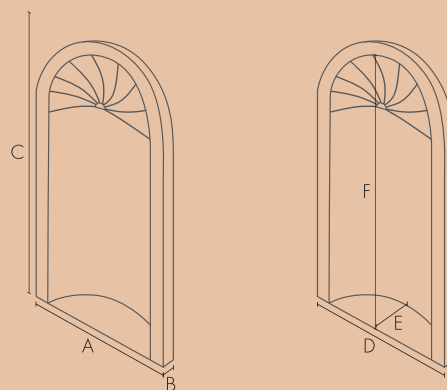
O1L		101	S	132 x 70 x 30 mm	881206	30
O1P		101	S	132 x 70 x 30 mm	881213	10
O2L		101	S	173 x 328 x 47 mm	881220	10
O2P		101	S	173 x 328 x 47 mm	881237	10
D-01		101	S	505 x 203 x 170 mm	881244***	2
D-02		101	S	365 x 192 x 377 mm	881251	2
D-03		101	S	365 x 192 x 377 mm	881268	2
D-04		101	S	290 x 183 x 170 mm	881275***	10
D-05		101	S	450 x 150 x 235 mm	881282	4
O-01		101	S	1074 x 540 x 80 mm	881619	5
O-02		101	S	725 x 245 x 70 mm	881626	5
WG-01		101	S	165 x 95 x 255 mm	880780	5
WG-02		101	S	180 x 90 x 230 mm	880797	5
WG-03		101	S	156 x 120 x 245 mm	880803	10



## NISZE/ NICHES/ NISCHEN



N-01

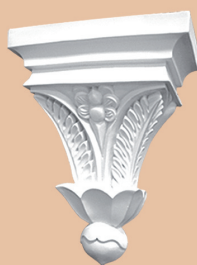


A	600 mm
B	190 mm
C	1105 mm
D	450 mm
E	155 mm
F	990 mm

## WSPORNIKI/ BRACKETS/ STUCKKONSOLEN



WG-01



WG-02



WG-03

## DEKORACJE/ DECORATIONS/ DEKORATIONEN



O1L



O1P



D-03



O2L



O2P



D-02



D-01



D-04



D-05



O-01



O-02



# KOLUMNY COLUMNS DECORSÄULEN

PU

K224		101	S	2000 x 240 mm	881510***	2
K224-C		101	S	2000 x 240 mm	881541***	1
K230		101	S	2000 x 300 mm	881558***	2
K230-C		101	S	2000 x 300 mm	881565***	1
K324		101	S	2000 x 240 mm	881572	2
K324-C		101	S	2000 x 240 mm	881589***	1
K330		101	S	2000 x 300 mm	881596	2
K330-C		101	S	2000 x 300 mm	881602***	1
KG124-1		101	S	385 x 120 mm	881350***	2
KG124-1C		101	S	385 x 120 mm	881367***	1
KG124-2		101	S	430 x 205 mm	881374***	2
KG124-2C		101	S	430 x 205 mm	881381***	1
KG124-3		101	S	410 x 360 mm	881398	2
KG124-3C		101	S	410 x 360 mm	881404***	1
KG130-1		101	S	425 x 170 mm	881411***	2
KG130-1C		101	S	425 x 170 mm	881428***	1
KG130-2		101	S	535 x 240 mm	881435***	2
KG130-2C		101	S	535 x 240 mm	881442***	1
KG130-3		101	S	480 x 365 mm	881459	2
KG130-3C		101	S	480 x 365 mm	881466***	1
KG224-4		101	S	440 x 160 mm	881473	2
KG224-4C		101	S	440 x 160 mm	881480***	1
KG230-4		101	S	515 x 200 mm	881497	2
KG230-4C		101	S	515 x 200 mm	881503***	1



KG124-1



KG124-2



KG124-3



K224



K324



KG224-4



KG224-4



**KG130-1**



**KG130-2**



**KG130-3**



**K230**



**K330**



**KG230-4**



**KG230-4**



## AKCESORIA MONTAŻOWE INSTALLATION ACCESSORIES MONTAGEZUBEHÖR



### SUPER MOCNY KLEJ DO SZYBKIEGO MONTAŻU SUPER-STRONG ADHESIVE FOR QUICK INSTALLATION SUPERSTARKER KLEBSTOFF FÜR SCHNELLE MONTAGE

Klej na bazie polimeru hybrydowego do kamienia naturalnego, drewna, betonu, metalu, cegły, szkła, ceramiki, tynku, poliuretanu, tworzyw sztucznych, płyty wiórowej.

Hybrid polymer-based adhesive for natural stone, wood, concrete, metal, brick, glass, ceramics, plaster, PU, plastics, and chipboard.

Hybridklebstoff auf Polymerbasis für Naturstein, Holz, Beton, Metall, Ziegel, Glas, Keramik, Gips, Polyurethan, Kunststoff, Spanplatten.



290 ml



653469



15



### KLEJ MONTAŻOWY ASSEMBLY ADHESIVE MONTAGEKLEBER

Klej do drewna, kamienia, ceramiki, tworzyw sztucznych (z wyjątkiem PE i PP) oraz metali na podłożach budowlanych.

An adhesive suitable for wood, stone, ceramics, plastics (except PE and PP) and metals on building substrates.

Kleber für Holz, Stein, Keramik, Kunststoffe (außer PE und PP) und Metalle auf Bauntergründen.



300 ml



881671



15



### SZYBKOSCHNĄCY KLEJ DO ŁĄCZEN QUICK-DRYING JOINT ADHESIVE SCHNELLTROCKNENDER FUGENKLEBER

Klej poliuretanowy do większości materiałów budowlanych z wyjątkiem (z wyjątkiem PE i PP), również wilgotnych.

Polyurethane adhesive for most construction materials with the exception of PE and PP, also on wet substrates.

Polyurethan-Klebstoff für die meisten Baumaterialien (mit Ausnahme von PE und PP), auch für nasse Materialien.



300 ml



881688



15



### GOTOWA MASA SZPACHLOWA DO SZTUKATERII READY-TO-USE JOINT COMPOUND FOR STUCCO GEBRAUCHSFERTIGE FUGENMASSE FÜR STUCKARBEITEN



330 g



808395



12

### KLIPSY MONTAŻOWE INSTALLATION CLIPS MONTAGECLIPS



LPC-50, LPC-51, LPC-52, Elegance® Decor



19



Znacznik wysokości montażu klipsa na opakowaniu.  
Clip mounting height marker on packaging.  
Clip-Höhenmarkierung auf der Verpackung.



672217



25



36

### KLIPS MONTAŻOWY INSTALLATION CLIPS MONTAGECLIP



12

LPC-16



899102



5000

# **EKSPOZYTORY** **DISPLAYS** **VERKAUFSDISPLAYS**

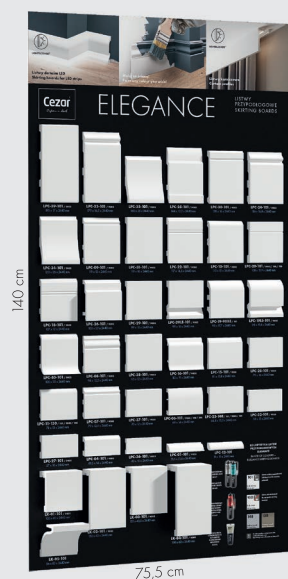
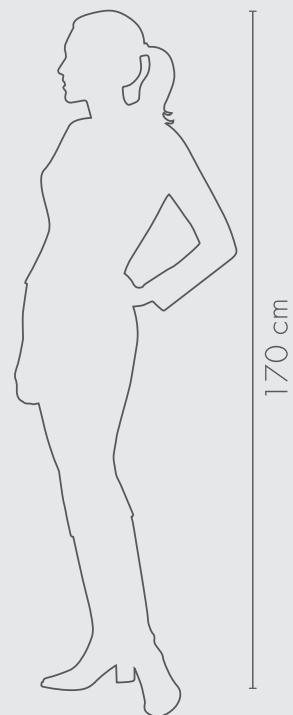


**W-RE-S-EX-EL-ML-MD-PL**  
**ELEGANCE®**



**AT-RE-ST-L8907002326EL**  
**ELEGANCE®**

7 pozycji, regulowane separatory  
 7 positions, adjustable separators  
 7 Positionen, verstellbare Trennwände



**W-RE-W-TABK1ECE**  
**ELEGANCE®**



**W-RE-W-LK-EL**  
**ELEGANCE®**



**W-RE-W-EEN/T**  
**ELEGANCE®**



## SIEDZIBA W EŁKU OUR HEADQUARTERS IN EŁK HAUPTSITZ IN EŁK

ul. Strefowa 2, 19-300 Ełk, POLAND

+48 87 620 99 00

+48 87 620 43 20

cezar@cezar.eu

## DZIAŁ OBSŁUGI KLIENTA/ CUSTOMER SERVICE/ KUNDENDIENST

1

### KAMILA CZEKAŁA

Specjalista ds. Sprzedaży i obsługi eksportu  
Sales and Export specialist  
Spezialist für Verkauf und Abwicklung im Export

+48 87 620 99 91

+48 515 055 760

k.czekala@cezar.eu

2

### EDYTA KORCZ-FADROWSKA

Specjalista ds. Sprzedaży i obsługi eksportu  
Sales and Export specialist  
Spezialist für Verkauf und Abwicklung im Export

+48 87 620 99 05

+48 510 233 012

e.korcza@cezar.eu

3

### MACIEJ NOWAKOWSKI

Specjalista ds. Sprzedaży i obsługi eksportu  
Sales and Export specialist  
Spezialist für Verkauf und Abwicklung im Export

+48 87 620 99 09

+48 513 039 638

m.nowakowski@cezar.eu

## RYNEK TRADYCYJNY TRADITIONAL MARKET TRADITIONELLER MARKT

### JAROSŁAW KALISZUK

Kierownik Sprzedaży - Polska  
Sales Area Manager - Poland  
Verkaufsleiter - Polen

+48 510 233 008

j.kaliszuk@cezar.eu

## RYNEK NOWOCZESNY MODERN MARKET MODERNER MARKT

### KRZYSZTOF RYDZIŃSKI

Dyrektor sprzedaży ds. rynku nowoczesnego  
Sales Director - Modern Trade  
Vertriebsleiter für den modernen Handel

+48 515 055 732

k.rydzinski@cezar.eu



## INWESTYCJE INVESTMENTS INVESTITIONEN

ENG

### EWA SZCZYGIELSKA

Kierownik Sprzedaży ds. rynku inwestycyjnego  
Investment Market Sales Manager  
Verkaufsleiter für den Investitionsmarkt

+48 505 334 337

e.szczygielska@cezar.eu

## EKSPORT EXPORT EXPORT

FR

ENG

### RENATA KOZŁOWSKA

Dyrektor Eksportu  
Export Director  
Exportdirektor

+48 87 620 97 09

+48 501 329 631

r.kozlowska@cezar.eu

ENG

RUS

### INNA POLYAKOVA

Zastępca Dyrektora Eksportu  
Deputy Export Director  
Stellvertretender Exportdirektor

+48 87 620 99 16

+48 695 830 010

i.polyakova@cezar.eu